

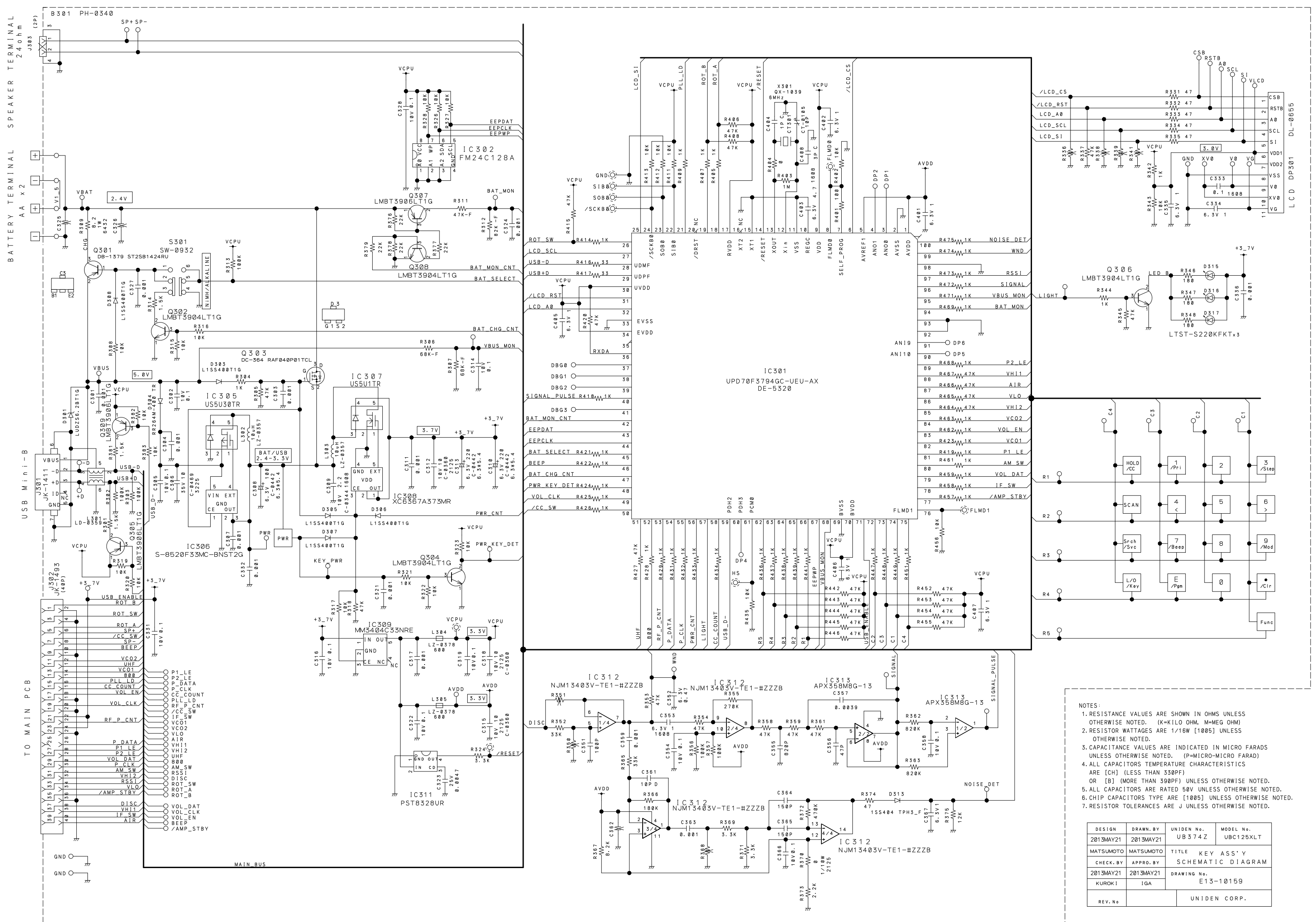
- NOTES:**
1. RESISTANCE VALUES ARE SHOWN IN OHMS UNLESS OTHERWISE NOTED. (K=KILO OHM, M=MEG OHM)
 2. RESISTOR WATTAGES ARE 1/16W [1005] UNLESS OTHERWISE NOTED.
 3. CAPACITANCE VALUES ARE INDICATED IN MICRO FARADS UNLESS OTHERWISE NOTED. (P=MICRO-MICRO FARAD)
 4. ALL CAPACITORS TEMPERATURE CHARACTERISTICS ARE [CH] (LESS THAN 330PF) OR [B] (MORE THAN 390PF) UNLESS OTHERWISE NOTED.
 5. CHIP CAPACITORS TYPE ARE [1005] AND RATED 50V UNLESS OTHERWISE NOTED.
 6. RESISTOR TOLERANCES ARE J UNLESS OTHERWISE NOTED.

DESIGN	DRAWN BY	UNIDEN No.	MODEL No.
2013MAY21	2013MAY21	UB374Z	UBC125XLT
MATSUMOTO	MATSUMOTO	TITLE MAIN ASS'Y SCHEMATIC DIAGRAM	
CHECK BY	APPRO BY	DRAWING No. E12-10158	
2013MAY21	2013MAY21		
KUROKI	IGA	UNIDEN CORP.	
REV.No			

MAIN ASSY BOTTOM VIEW (JACK VIEW SIDE)

J2 JK-1492 40P (44P)

J1 JK-1156

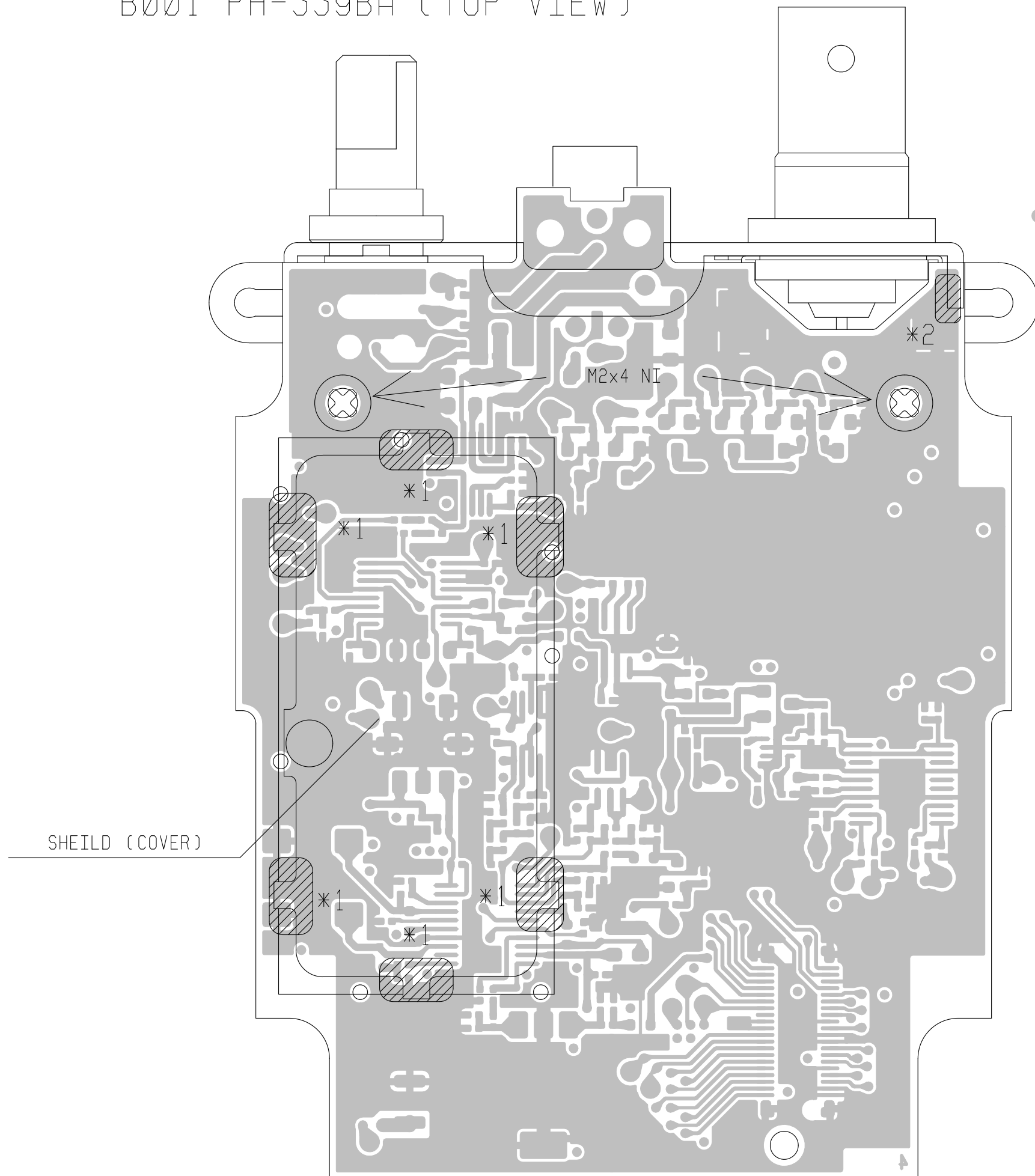


- NOTES:
1. RESISTANCE VALUES ARE SHOWN IN OHMS UNLESS OTHERWISE NOTED. (K=KILO OHM, M=MEG OHM)
 2. RESISTOR WATTAGES ARE 1/16W [1005] UNLESS OTHERWISE NOTED.
 3. CAPACITANCE VALUES ARE INDICATED IN MICRO FARADS UNLESS OTHERWISE NOTED. (P=MICRO-MICRO FARAD)
 4. ALL CAPACITORS TEMPERATURE CHARACTERISTICS ARE [CH] (LESS THAN 330PF) OR [B] (MORE THAN 330PF) UNLESS OTHERWISE NOTED.
 5. ALL CAPACITORS ARE RATED 50V UNLESS OTHERWISE NOTED.
 6. CHIP CAPACITORS TYPE ARE [1005] UNLESS OTHERWISE NOTED.
 7. RESISTOR TOLERANCES ARE J UNLESS OTHERWISE NOTED.

DESIGN	DRAWN BY	UNIDEN No.	MODEL No.
2013MAY21	2013MAY21	UB374Z	UBC125XLT
MATSUMOTO	MATSUMOTO	TITLE	KEY ASS'Y
CHECK BY	APPRO. BY	SCHEMATIC DIAGRAM	
2013MAY21	2013MAY21	DRAWING No.	E13-10159
KUROKI	IGA	UNIDEN CORP.	
REV. No			

B001 PH-339BA (TOP VIEW)

Use Pb Free Solder



*1 AFTER CHECK MAIN PCB SOLDER THE SHEILD CASE AND SHEILD COVER.

Close a SHEILD COVER without a crevice exactly.

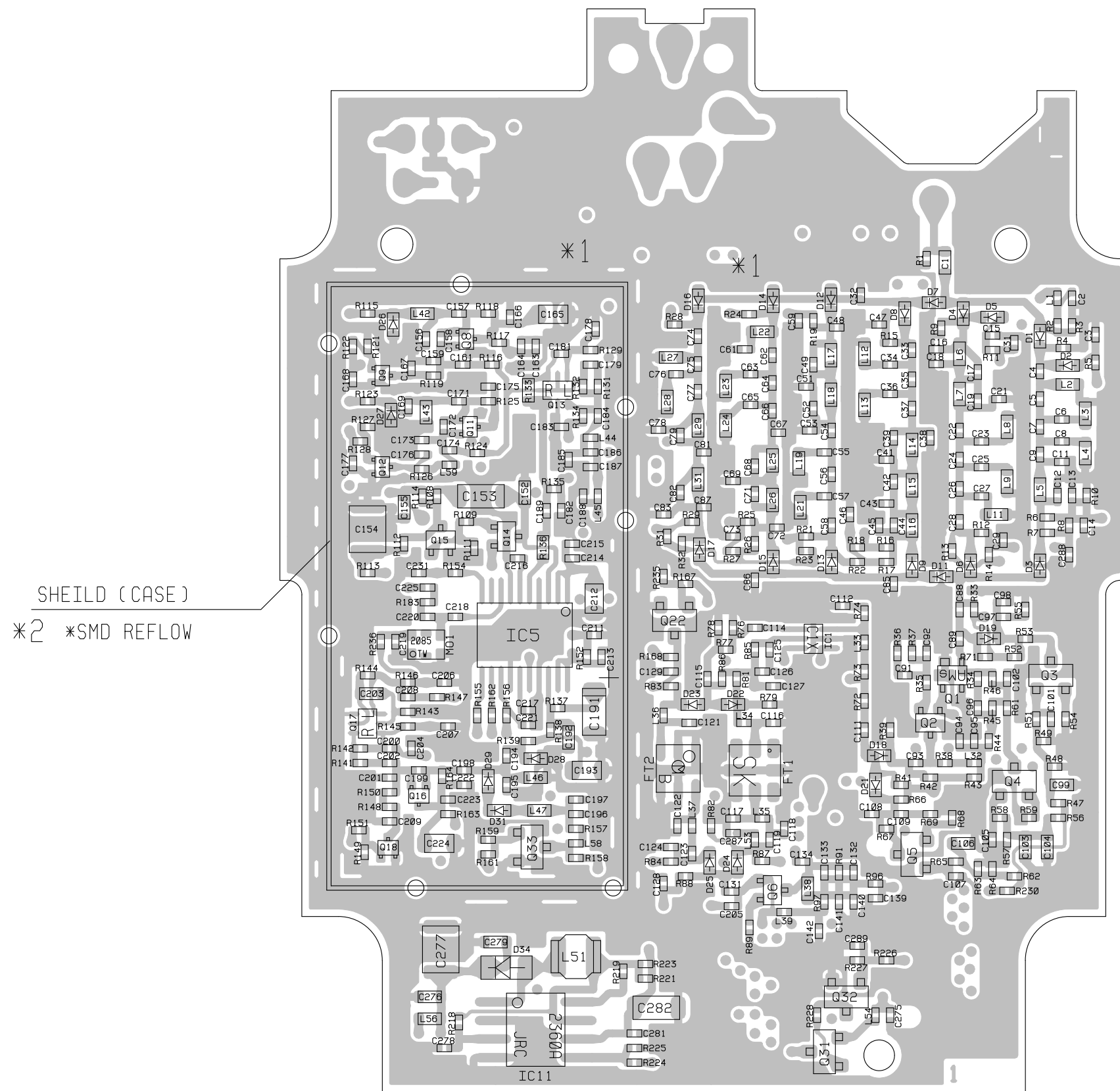
*2 SOLDERING PCB AND CHASSIS.

 SOLDERING

DESIGN. BY	DRAWN. BY	UNIDEN NO.	MODEL NO.
2013MAY21	2013MAY21	UB374Z	UBC125XLT
MATSUMOTO	MATSUMOTO	TITLE MAIN ASS'Y	
CHECK. BY	APPRO. BY	PARTS ASS'Y TOP VIEW	
2013MAY21	2013MAY21	DRAWING NO.	
KUROKI	IGA	E23-32389	
REV. NO.		UNIDEN CORP.	

B001 PH-339BA (TOP VIEW)

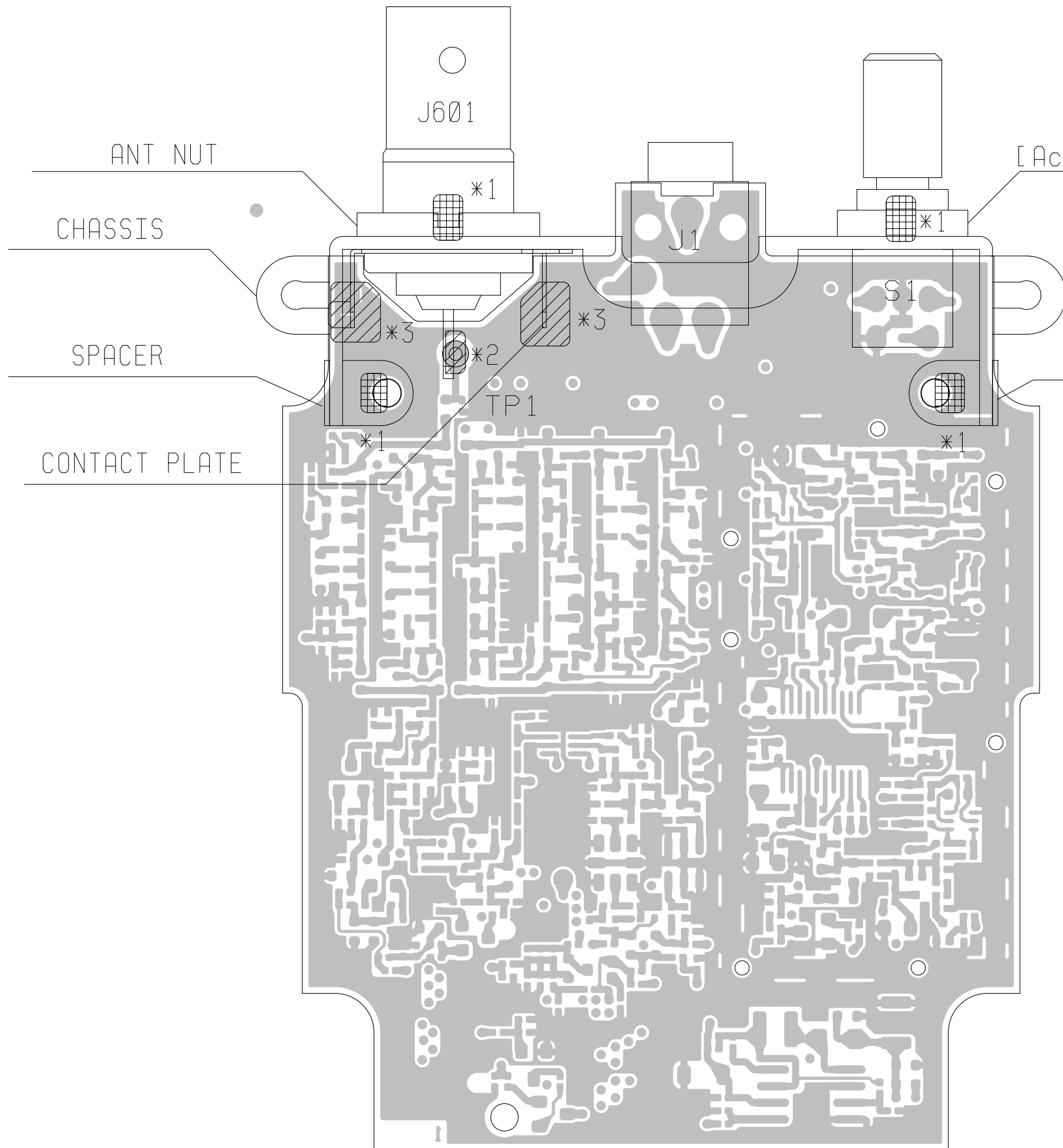
Use Pb Free Solder



- *1: No Need apply EPOXY RESIN this model.
- *2: SHEILD (CASE) IS SMD REFLOW SOLDRING.

DESIGN. BY	DRAWN. BY	UNIDEN NO.	MODEL NO.
2013MAY21	2013MAY21	UB374Z	UBC125XLT
MATSUMOTO	MATSUMOTO	TITLE MAIN ASS'Y 1/2	
CHECK. BY	APPRO. BY	CHIP LAYOUT TOP VIEW	
2013MAY21	2013MAY21	DRAWING NO.	
KUROKI	IGA	E23-32385	
REV. NO.		UNIDEN CORP.	

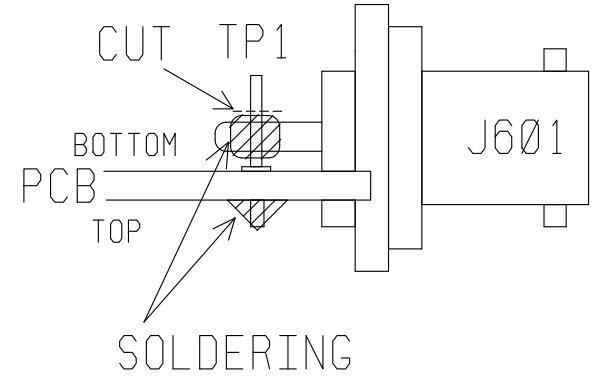
Use Pb Free Solder



HEX NUT
[Accessory of SR-439]

*1: NJ LOCK GREEN.
THREE BOND 1401B (ZABD7002002)
Do not apply to S1 shaft.

*2: SOLDERING TP1 AND J601
CUT EXCESS TP1



*3: SOLDERING PCB AND CONTACT PLATE

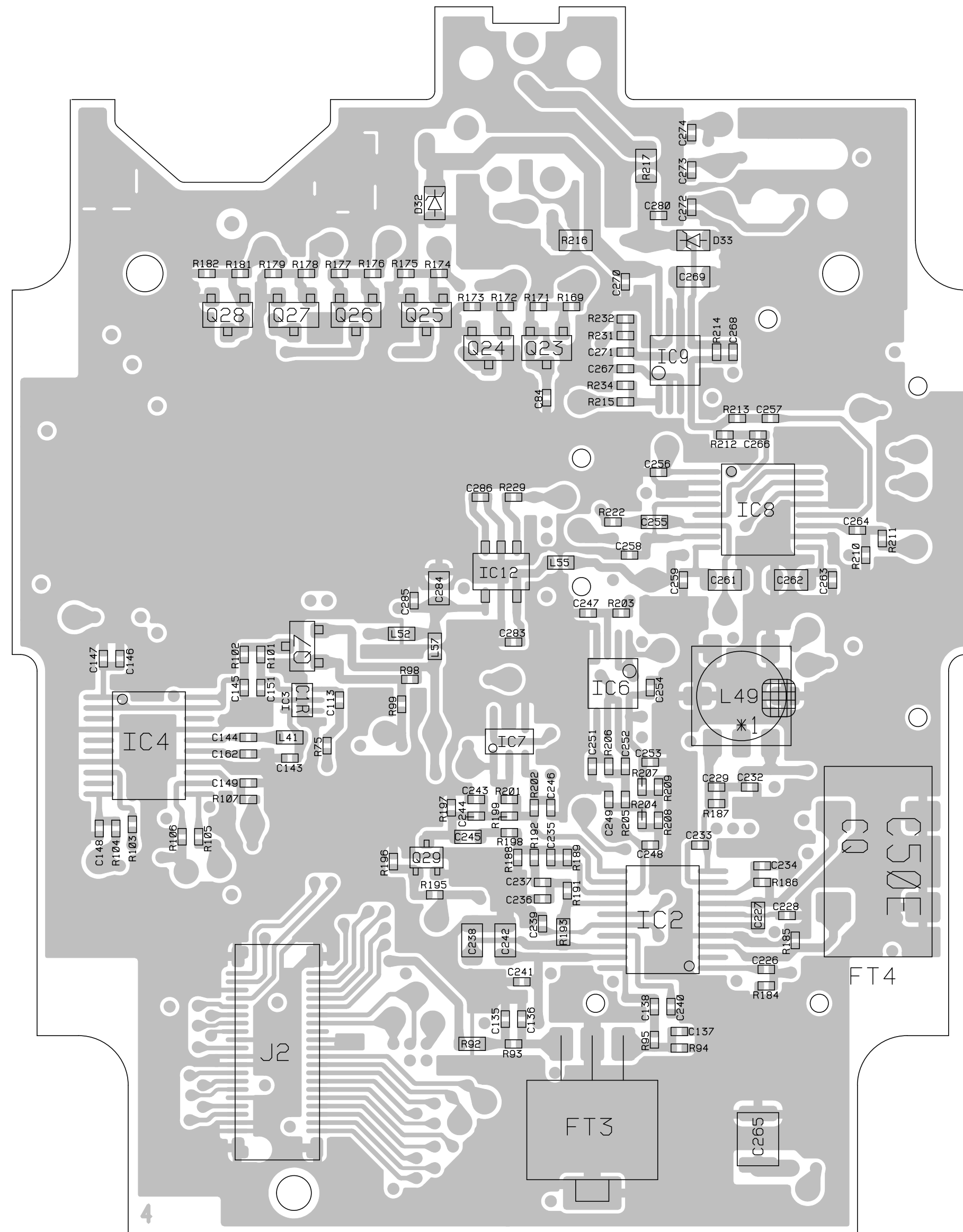
- Assembling Order
1. J1 and TP1 manual Soldering to PCB.
 2. Assemble the CHASSIS with J601, CONTACT PLATE by ANT NUT.
 3. Assemble the CHASSIES with S1 by HEX NUT.
 4. Assemble to PCB the assembled CHASSIES by M2x4 screw.
 5. Soldering S1, J601 and TP1, then CONTACT PLATE and PCB.

B001 PH-339BA (BOTTOM VIEW)

DESIGN. BY	DRAWN. BY	UNIDEN NO.	MODEL NO.
2013MAY21	2013MAY21	UB374Z	UBC125XLT
MATSUMOTO	MATSUMOTO	TITLE	MAIN ASS'Y 1/2
CHECK. BY	APPRO. BY	PARTS ASS'Y BOTTOM VIEW	
2013MAY21	2013MAY21	DRAWING NO.	
KUROKI	IGA	E23-32390	
REV. NO.		UNIDEN CORP.	

Use Pb Free Solder

B001 PH-339BA (BOTTOM VIEW)

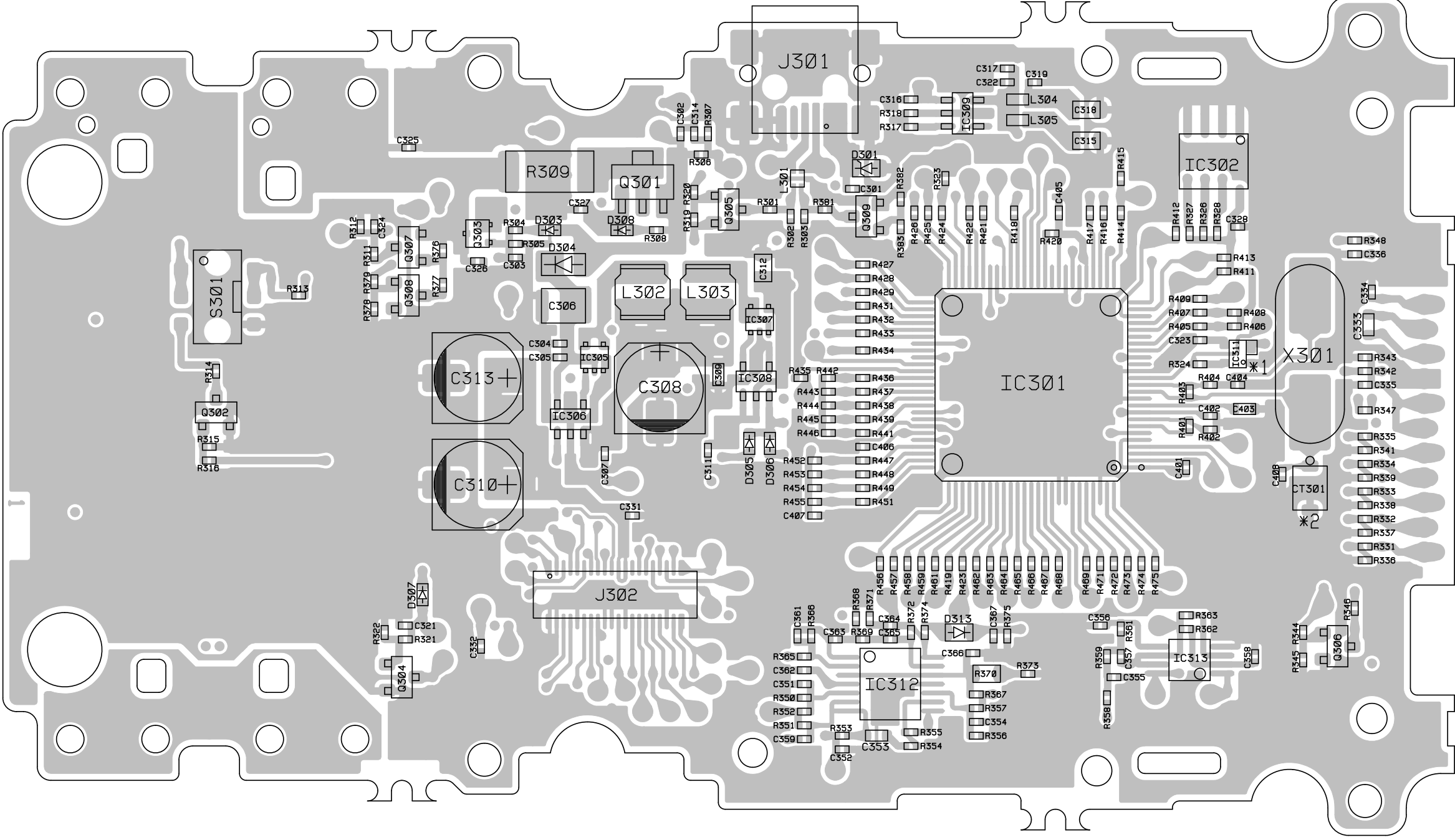


 *1: NJ LOCK GREEN AFTER ADJ.
 THREE BOND 1401B (ZABD7002002)

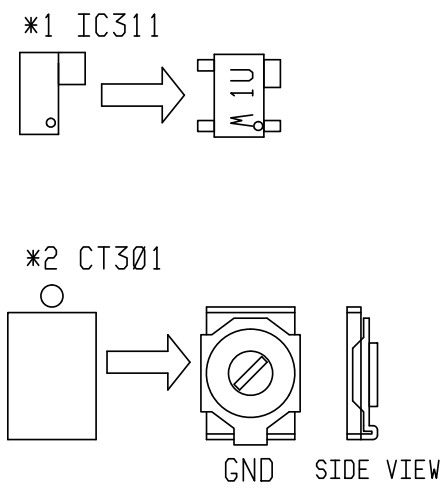
DESIGN. BY	DRAWN. BY	UNIDEN NO.	MODEL NO.
2013MAY22	2013MAY22	UB374Z	UBC125XLT
MATSUMOTO	MATSUMOTO	TITLE	MAIN ASS'Y 1/2
CHECK. BY	APPRO. BY	CHIP LAYOUT BOTTOM VIEW	
2013MAY22	2013MAY22	DRAWING NO.	
KUROKI	IGA	E23-32387	
REV. NO.		UNIDEN CORP.	

Use Pb Free Solder

B301 PH-340AB (TOP VIEW)



PARTS DIRECTION

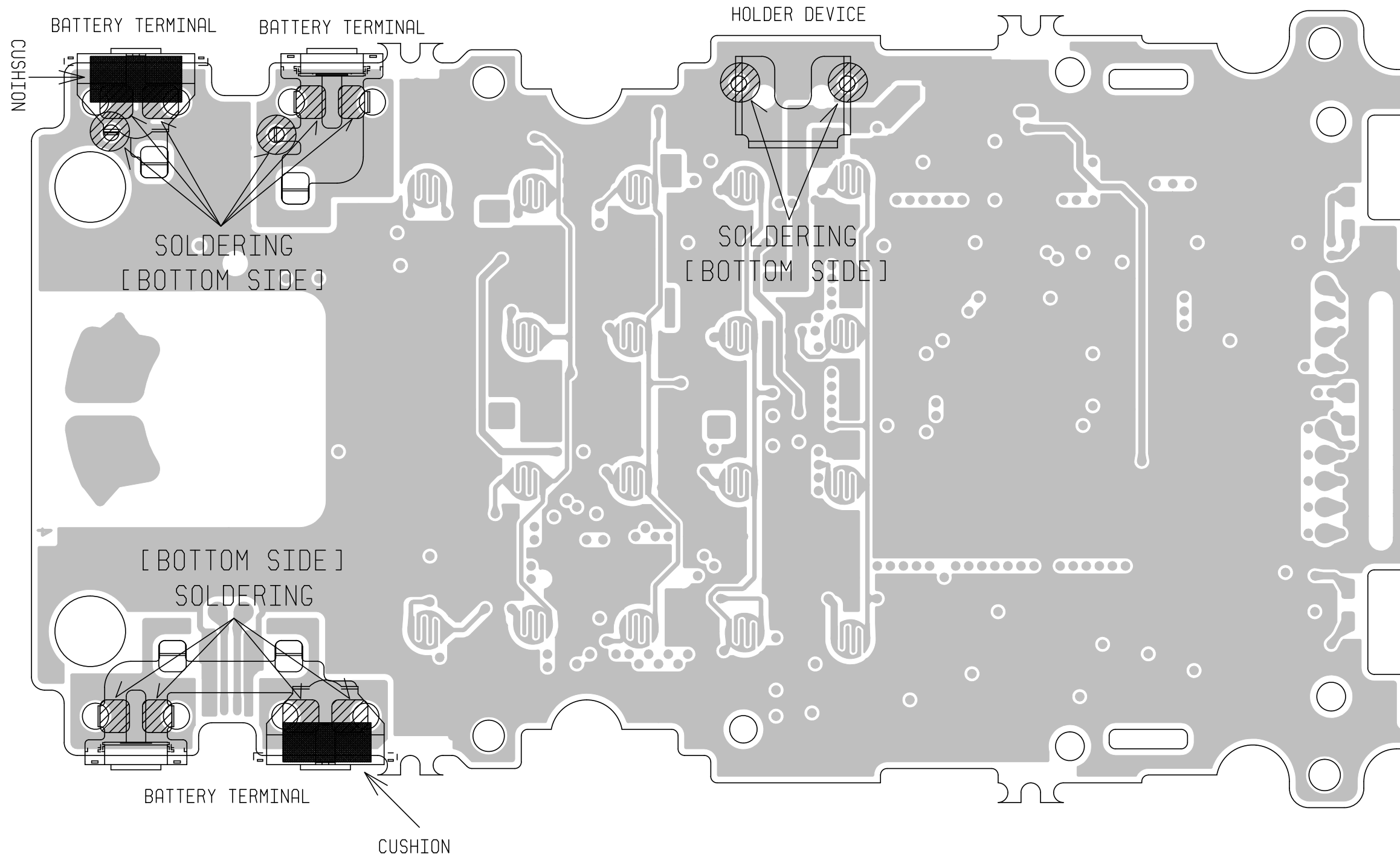


DESIGN. BY	DRAWN. BY	UNIDEN NO.	MODEL NO.
2013MAY21	2013MAY21	UB374Z	UBC125XL T
MATSUMOTO	MATSUMOTO	TITLE	KEY ASS'Y 1/2
CHECK. BY	APPRO. BY	CHIP LAYOUT TOP VIEW	
2013MAY21	2013MAY21	DRAWING NO.	
KUROKI	IGA	E23-32392	
REV. NO.		UNIDEN CORP.	

Use Pb Free Solder

B301 PH-340AB (TOP VIEW)

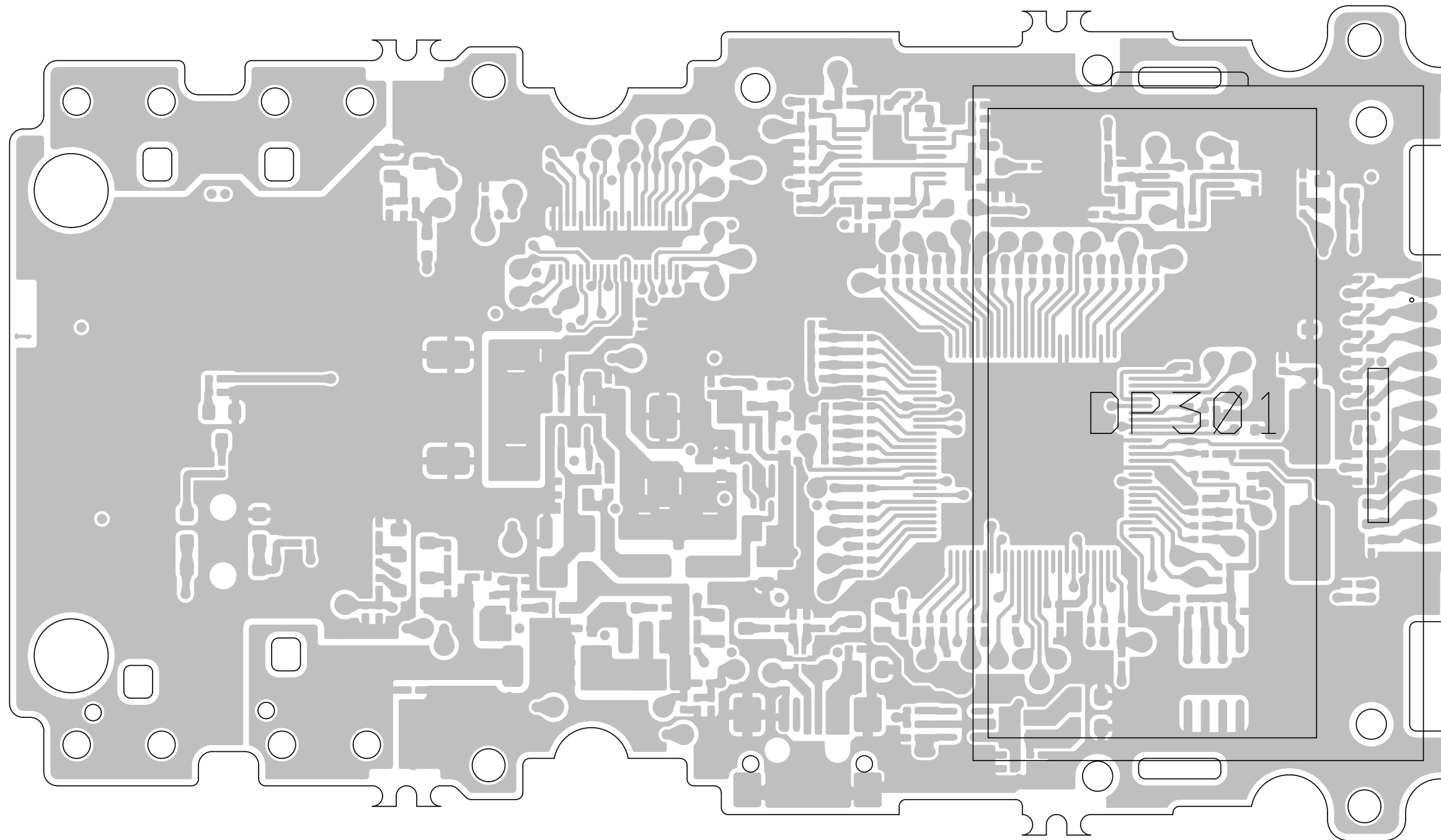
 SOLDERING



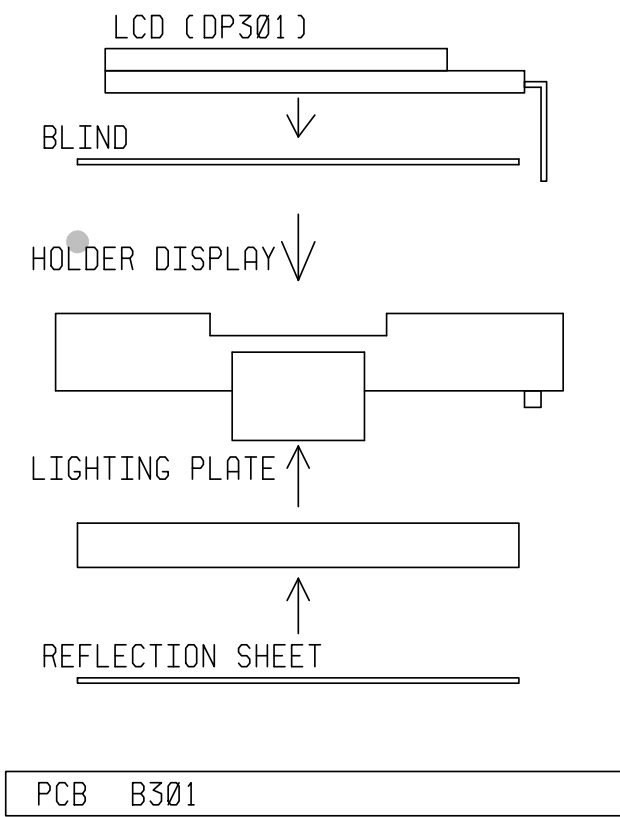
DESIGN. BY	DRAWN. BY	UNIDEN NO.	MODEL NO.
2013MAY21	2013MAY21	UB374Z	UBC125XLT
MATSUMOTO	MATSUMOTO	TITLE	KEY ASS'Y
CHECK. BY	APPRO. BY	PARTS ASS'Y TOP VIEW	
2013MAY21	2013MAY21	DRAWING NO.	
KUROKI	IGA	E23-32396	
REV. NO.		UNIDEN CORP.	

Use Pb Free Solder

B301 PH-340AB (BOTTOM VIEW)



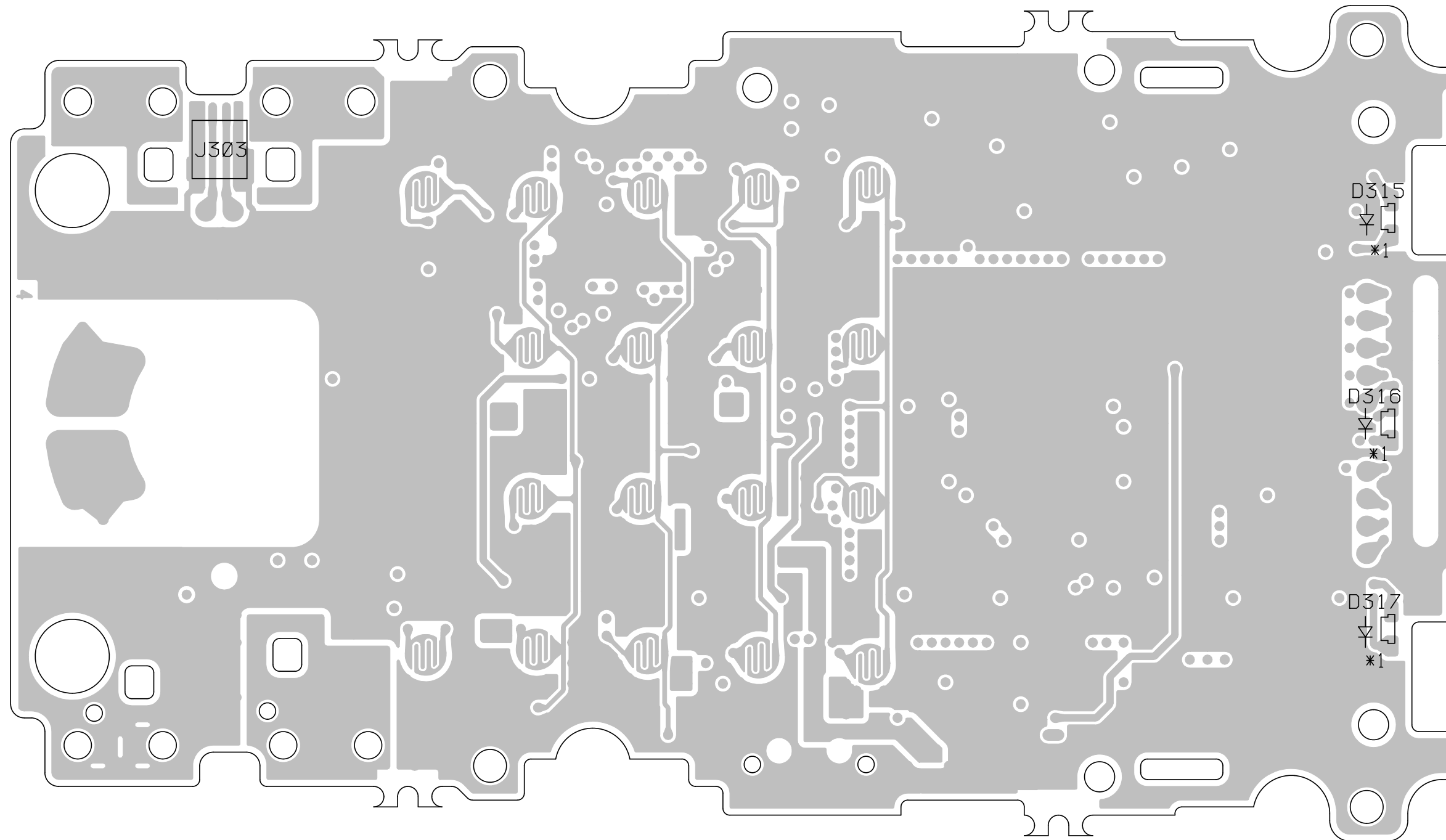
*: Peel off the LCD Protection Sheet before assembling.



DESIGN. BY	DRAWN. BY	UNIDEN NO.	MODEL NO.
2013MAY21	2013MAY21	UB374Z	UBC125XLT
MATSUMOTO	MATSUMOTO	TITLE KEY ASS'Y 1/2	
CHECK. BY	APPRO. BY	PARTS ASS'Y BOTTOM VIEW	
2013MAY21	2013MAY21	DRAWING NO.	
KUROKI	IGA	E23-32397	
REV. NO.		UNIDEN CORP.	

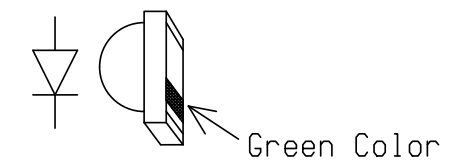
Use Pb Free Solder

B301 PH-340AB (BOTTOM VIEW)



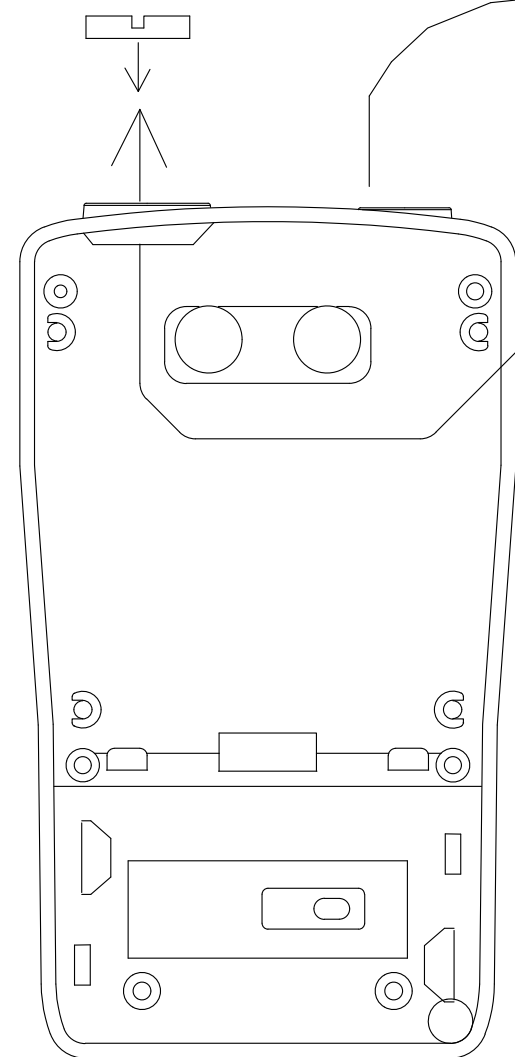
PARTS DIRECTION

*1 D315, D316, D317

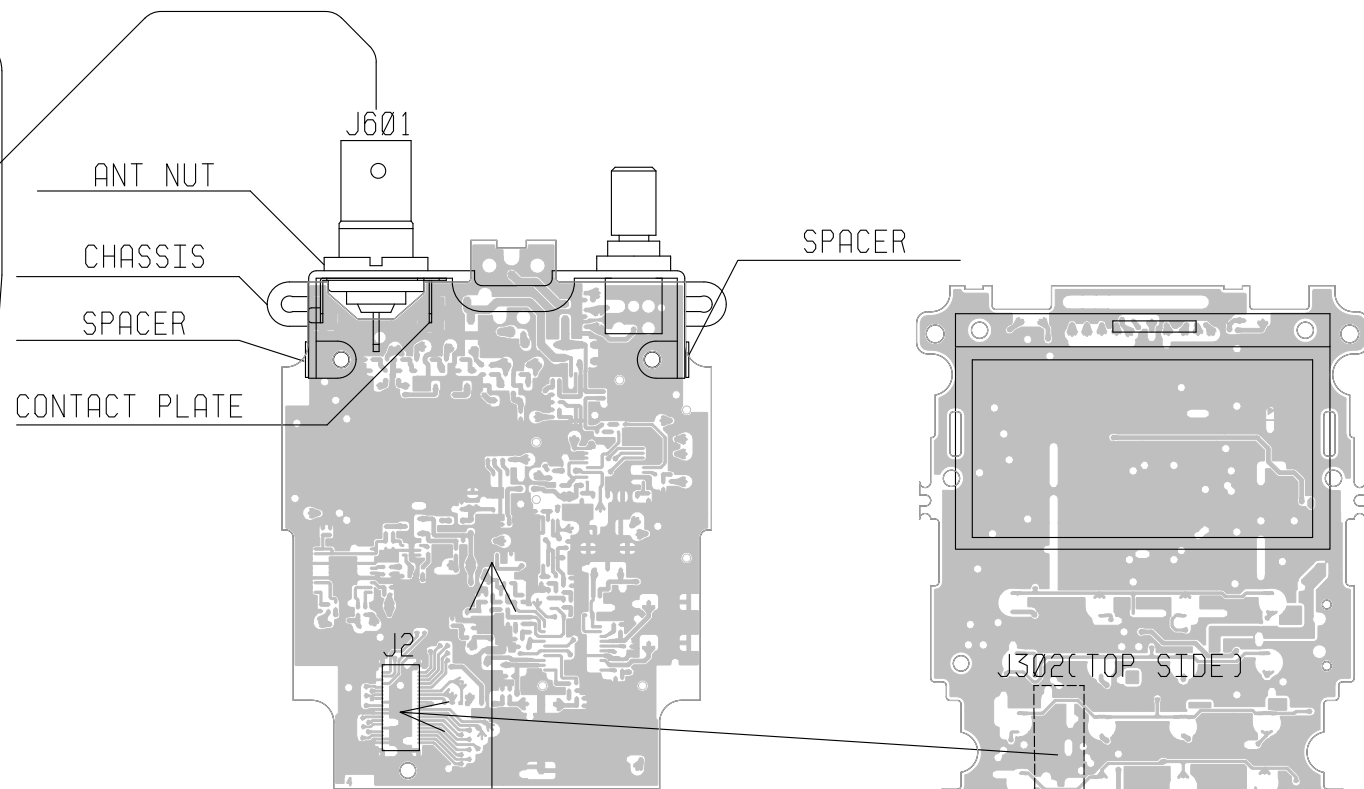


DESIGN. BY	DRAWN. BY	UNIDEN NO.	MODEL NO.
2013MAY21	2013MAY21	UB374Z	UBC125XLT
MATSUMOTO	MATSUMOTO	TITLE	KEY ASS'Y 1/2
CHECK. BY	APPRO. BY	CHIP LAYOUT BOTTOM VIEW	
2013MAY21	2013MAY21	DRAWING NO.	
KUROKI	IGA	E23-32394	
REV. NO.		UNIDEN CORP.	

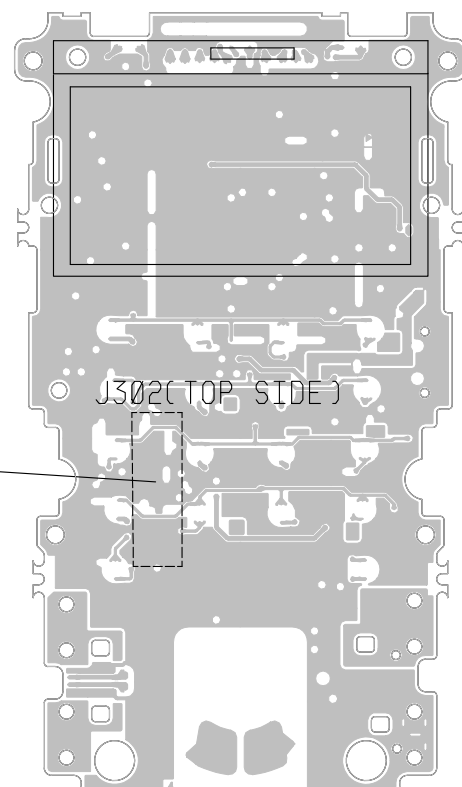
BNC NUT
(Accessory of J601)



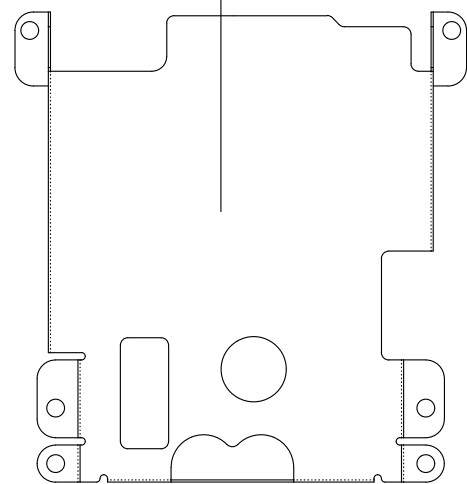
CASE REAR (COMP)
(INSIDE VIEW)



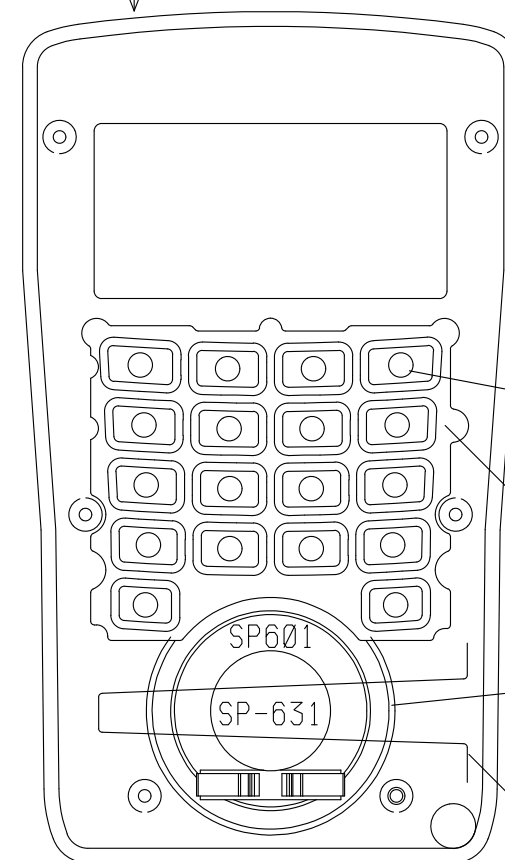
B001: PH-339 MAIN PCB
(BOTTOM VIEW)



B301: PH-340 KEY PCB
(BOTTOM VIEW)



SHEILD



CASE FRONT
(INSIDE VIEW)

KEY RUBBER

CONTACT SHEET

RUBBER SPACER X 2PCS

TORSION SPRING

DESIGN. BY	DRAWN. BY	UNIDEN NO.	MODEL NO.
2013MAY21	2013MAY21	UB374Z	UBC125XLT
MATSUMOTO	MATSUMOTO	TITLE	
CHECK. BY	APPRO. BY	WIRING DIAGRAM	
2013MAY21	2013MAY21	DRAWING NO.	
KUROKI	IGA	E33-5977	
REV. NO.		UNIDEN CORP.	

REF NO	ASSY CODE	PARTS CODE	DESCRIPTION	SPEC
B001	AB374ZVBAE	BPHG0339BBZ	PCB:MAIN	PH-339BB
B301	AB374ZVBBE	BPHG0340ABZ	PCB:KEY	PH-340AB
C001	AB374ZVBAE	BCML811025G	C:CERAMIC M/L (1608) TAPE	0.001UF 50V K B
C002	AB374ZVBAE	BCNB811025G	C:CERAMIC M/L (1005) TAPE	0.001u 50V K B
C003	AB374ZVBAE	BCNA813304G	C:CERAMIC M/L (1005) TAPE	33PF 50V J CH
C004	AB374ZVBAE	BCNA813591G	C:CERAMIC M/L (1005) TAPE	3.5PF 50V C CH
C005	AB374ZVBAE	BCNA812091G	C:CERAMIC M/L (1005) TAPE	2PF 50V C CH
C006	AB374ZVBAE	BCNA817091G	C:CERAMIC M/L (1005) TAPE	7PF 50V C CH
C007	AB374ZVBAE	BCNA812591G	C:CERAMIC M/L (1005) TAPE	2.5PF 50V C CH
C008	AB374ZVBAE	BCNA818092G	C:CERAMIC M/L (1005) TAPE	8PF 50V D CH
C009	AB374ZVBAE	BCNA814098G	C:CERAMIC M/L (1005) TAPE	4PF 50V B CH
C011	AB374ZVBAE	BCNA811091G	C:CERAMIC M/L (1005) TAPE	1p 50V C CH
C012	AB374ZVBAE	BCNA811091G	C:CERAMIC M/L (1005) TAPE	1p 50V C CH
C014	AB374ZVBAE	BCNB811025G	C:CERAMIC M/L (1005) TAPE	0.001u 50V K B
C015	AB374ZVBAE	BCNA811014G	C:CERAMIC M/L (1005) TAPE	100PF 50V J CH
C016	AB374ZVBAE	BCNA813091G	C:CERAMIC M/L (1005) TAPE	3PF 50V C CH
C017	AB374ZVBAE	BCNA811091G	C:CERAMIC M/L (1005) TAPE	1p 50V C CH
C018	AB374ZVBAE	BCNA819092G	C:CERAMIC M/L (1005) TAPE	9PF 50V D CH
C019	AB374ZVBAE	BCNA812091G	C:CERAMIC M/L (1005) TAPE	2PF 50V C CH
C021	AB374ZVBAE	BCNA816091G	C:CERAMIC M/L (1005) TAPE	6PF 50V C CH
C022	AB374ZVBAE	BCNA811002G	C:CERAMIC M/L (1005) TAPE	10PF 50V D CH
C023	AB374ZVBAE	BCNA818204G	C:CERAMIC M/L (1005) TAPE	82PF 50V J CH
C024	AB374ZVBAE	BCNA816091G	C:CERAMIC M/L (1005) TAPE	6PF 50V C CH
C025	AB374ZVBAE	BCNA811804G	C:CERAMIC M/L (1005) TAPE	18PF 50V J CH
C026	AB374ZVBAE	BCNA816091G	C:CERAMIC M/L (1005) TAPE	6PF 50V C CH
C027	AB374ZVBAE	BCNA812204G	C:CERAMIC M/L (1005) TAPE	22PF 50V J CH
C028	AB374ZVBAE	BCNA811204G	C:CERAMIC M/L (1005) TAPE	12PF 50V J CH
C029	AB374ZVBAE	BCNA811014G	C:CERAMIC M/L (1005) TAPE	100PF 50V J CH
C031	AB374ZVBAE	BCNB811025G	C:CERAMIC M/L (1005) TAPE	0.001u 50V K B
C033	AB374ZVBAE	BCNA813904G	C:CERAMIC M/L (1005) TAPE	39PF 50V J CH
C034	AB374ZVBAE	BCNA814704G	C:CERAMIC M/L (1005) TAPE	47PF 50V J CH
C035	AB374ZVBAE	BCNA818092G	C:CERAMIC M/L (1005) TAPE	8PF 50V D CH
C036	AB374ZVBAE	BCNA811214G	C:CERAMIC M/L (1005) TAPE	120PF 50V J CH
C037	AB374ZVBAE	BCNA811204G	C:CERAMIC M/L (1005) TAPE	12PF 50V J CH
C038	AB374ZVBAE	BCNA811002G	C:CERAMIC M/L (1005) TAPE	10PF 50V D CH
C041	AB374ZVBAE	BCNA811804G	C:CERAMIC M/L (1005) TAPE	18PF 50V J CH
C042	AB374ZVBAE	BCNA814098G	C:CERAMIC M/L (1005) TAPE	4PF 50V B CH
C043	AB374ZVBAE	BCNA811504G	C:CERAMIC M/L (1005) TAPE	15PF 50V J CH
C044	AB374ZVBAE	BCNA812091G	C:CERAMIC M/L (1005) TAPE	2PF 50V C CH
C045	AB374ZVBAE	BCNA818092G	C:CERAMIC M/L (1005) TAPE	8PF 50V D CH
C046	AB374ZVBAE	BCNB811025G	C:CERAMIC M/L (1005) TAPE	0.001u 50V K B
C047	AB374ZVBAE	BCNB811025G	C:CERAMIC M/L (1005) TAPE	0.001u 50V K B
C048	AB374ZVBAE	BCNA811204G	C:CERAMIC M/L (1005) TAPE	12PF 50V J CH
C049	AB374ZVBAE	BCNA811591G	C:CERAMIC M/L (1005) TAPE	1.5PF 50V C CH
C051	AB374ZVBAE	BCNA812704G	C:CERAMIC M/L (1005) TAPE	27PF 50V J CH
C052	AB374ZVBAE	BCNA812091G	C:CERAMIC M/L (1005) TAPE	2PF 50V C CH
C054	AB374ZVBAE	BCNA812204G	C:CERAMIC M/L (1005) TAPE	22PF 50V J CH
C055	AB374ZVBAE	BCNA512214G	C:CERAMIC M/L (1005) TAPE	220PF 25V J CH
C056	AB374ZVBAE	BCNA811204G	C:CERAMIC M/L (1005) TAPE	12PF 50V J CH
C057	AB374ZVBAE	BCNA818204G	C:CERAMIC M/L (1005) TAPE	82PF 50V J CH
C058	AB374ZVBAE	BCNA812204G	C:CERAMIC M/L (1005) TAPE	22PF 50V J CH

C059	AB374ZVBAE	BCNB811025G	C:CERAMIC M/L (1005) TAPE	0.001u 50V K B
C062	AB374ZVBAE	BCNA815604G	C:CERAMIC M/L (1005) TAPE	56PF 50V J CH
C063	AB374ZVBAE	BCNA813904G	C:CERAMIC M/L (1005) TAPE	39PF 50V J CH
C064	AB374ZVBAE	BCNA811804G	C:CERAMIC M/L (1005) TAPE	18PF 50V J CH
C065	AB374ZVBAE	BCNA811514G	C:CERAMIC M/L (1005) TAPE	150PF 50V J CH
C066	AB374ZVBAE	BCNA813904G	C:CERAMIC M/L (1005) TAPE	39PF 50V J CH
C067	AB374ZVBAE	BCNA812204G	C:CERAMIC M/L (1005) TAPE	22PF 50V J CH
C068	AB374ZVBAE	BCNA812591G	C:CERAMIC M/L (1005) TAPE	2.5PF 50V C CH
C069	AB374ZVBAE	BCNA813904G	C:CERAMIC M/L (1005) TAPE	39PF 50V J CH
C071	AB374ZVBAE	BCNA815098G	C:CERAMIC M/L (1005) TAPE	5PF 50V B CH
C072	AB374ZVBAE	BCNA811204G	C:CERAMIC M/L (1005) TAPE	12PF 50V J CH
C073	AB374ZVBAE	BCNB811025G	C:CERAMIC M/L (1005) TAPE	0.001u 50V K B
C074	AB374ZVBAE	BCNA811514G	C:CERAMIC M/L (1005) TAPE	150PF 50V J CH
C075	AB374ZVBAE	BCNA818204G	C:CERAMIC M/L (1005) TAPE	82PF 50V J CH
C076	AB374ZVBAE	BCNB811525G	C:CERAMIC M/L (1005) TAPE	0.0015u 50V K B
C077	AB374ZVBAE	BCNA811514G	C:CERAMIC M/L (1005) TAPE	150PF 50V J CH
C081	AB374ZVBAE	BCNA815604G	C:CERAMIC M/L (1005) TAPE	56PF 50V J CH
C082	AB374ZVBAE	BCNA817091G	C:CERAMIC M/L (1005) TAPE	7PF 50V C CH
C084	AB374ZVBAE	BCNB811025G	C:CERAMIC M/L (1005) TAPE	0.001u 50V K B
C087	AB374ZVBAE	BCNA813304G	C:CERAMIC M/L (1005) TAPE	33PF 50V J CH
C088	AB374ZVBAE	BCNB811025G	C:CERAMIC M/L (1005) TAPE	0.001u 50V K B
C089	AB374ZVBAE	BCNB811025G	C:CERAMIC M/L (1005) TAPE	0.001u 50V K B
C091	AB374ZVBAE	BCNB811025G	C:CERAMIC M/L (1005) TAPE	0.001u 50V K B
C092	AB374ZVBAE	BCNA819092G	C:CERAMIC M/L (1005) TAPE	9PF 50V D CH
C093	AB374ZVBAE	BCNB811025G	C:CERAMIC M/L (1005) TAPE	0.001u 50V K B
C094	AB374ZVBAE	BCNA811002G	C:CERAMIC M/L (1005) TAPE	10PF 50V D CH
C095	AB374ZVBAE	BCNB311035G	C:CERAMIC M/L (1005) TAPE	0.01UF 16V K B
C096	AB374ZVBAE	BCNA813304G	C:CERAMIC M/L (1005) TAPE	33PF 50V J CH
C097	AB374ZVBAE	BCNB311035G	C:CERAMIC M/L (1005) TAPE	0.01UF 16V K B
C098	AB374ZVBAE	BCNB811025G	C:CERAMIC M/L (1005) TAPE	0.001u 50V K B
C099	AB374ZVBAE	BCML112295G	C:CERAMIC M/L (1608) TAPE	2.2UF 10V K B
C101	AB374ZVBAE	BCNB811025G	C:CERAMIC M/L (1005) TAPE	0.001u 50V K B
C102	AB374ZVBAE	BCNB811025G	C:CERAMIC M/L (1005) TAPE	0.001u 50V K B
C103	AB374ZVBAE	BCML112295G	C:CERAMIC M/L (1608) TAPE	2.2UF 10V K B
C104	AB374ZVBAE	BCML112295G	C:CERAMIC M/L (1608) TAPE	2.2UF 10V K B
C105	AB374ZVBAE	BCNB811025G	C:CERAMIC M/L (1005) TAPE	0.001u 50V K B
C106	AB374ZVBAE	BCML112295G	C:CERAMIC M/L (1608) TAPE	2.2UF 10V K B
C107	AB374ZVBAE	BCNB111045G	C:CERAMIC M/L (1005) TAPE	0.1u 10V K B
C109	AB374ZVBAE	BCNA512214G	C:CERAMIC M/L (1005) TAPE	220PF 25V J CH
C111	AB374ZVBAE	BCNB811025G	C:CERAMIC M/L (1005) TAPE	0.001u 50V K B
C112	AB374ZVBAE	BCNB311035G	C:CERAMIC M/L (1005) TAPE	0.01UF 16V K B
C113	AB374ZVBAE	BCNB811025G	C:CERAMIC M/L (1005) TAPE	0.001u 50V K B
C114	AB374ZVBAE	BCNB811025G	C:CERAMIC M/L (1005) TAPE	0.001u 50V K B
C115	AB374ZVBAE	BCNB811025G	C:CERAMIC M/L (1005) TAPE	0.001u 50V K B
C116	AB374ZVBAE	BCNA817581G	C:CERAMIC	0.75PF 50V C CH
C117	AB374ZVBAE	BCNA817581G	C:CERAMIC	0.75PF 50V C CH
C118	AB374ZVBAE	BCNA814098G	C:CERAMIC M/L (1005) TAPE	4PF 50V B CH
C119	AB374ZVBAE	BCNA811002G	C:CERAMIC M/L (1005) TAPE	10PF 50V D CH
C121	AB374ZVBAE	BCNA811591G	C:CERAMIC M/L (1005) TAPE	1.5PF 50V C CH
C122	AB374ZVBAE	BCNA811591G	C:CERAMIC M/L (1005) TAPE	1.5PF 50V C CH
C123	AB374ZVBAE	BCNA819092G	C:CERAMIC M/L (1005) TAPE	9PF 50V D CH
C124	AB374ZVBAE	BCNA818092G	C:CERAMIC M/L (1005) TAPE	8PF 50V D CH
C125	AB374ZVBAE	BCNB811025G	C:CERAMIC M/L (1005) TAPE	0.001u 50V K B
C126	AB374ZVBAE	BCNA811002G	C:CERAMIC M/L (1005) TAPE	10PF 50V D CH

C127	AB374ZVBAE	BCNB111045G	C:CERAMIC M/L (1005) TAPE	0.1u 10V K B
C128	AB374ZVBAE	BCNB111045G	C:CERAMIC M/L (1005) TAPE	0.1u 10V K B
C129	AB374ZVBAE	BCNA313314G	C:CERAMIC M/L (1005) TAPE	330PF 16V J CH
C131	AB374ZVBAE	BCNB811025G	C:CERAMIC M/L (1005) TAPE	0.001u 50V K B
C132	AB374ZVBAE	BCNA818204G	C:CERAMIC M/L (1005) TAPE	82PF 50V J CH
C133	AB374ZVBAE	BCNA815098G	C:CERAMIC M/L (1005) TAPE	5PF 50V B CH
C134	AB374ZVBAE	BCNA812204G	C:CERAMIC M/L (1005) TAPE	22PF 50V J CH
C137	AB374ZVBAE	BCNA811091G	C:CERAMIC M/L (1005) TAPE	1p 50V C CH
C138	AB374ZVBAE	BCNB311035G	C:CERAMIC M/L (1005) TAPE	0.01UF 16V K B
C139	AB374ZVBAE	BCNB311035G	C:CERAMIC M/L (1005) TAPE	0.01UF 16V K B
C140	AB374ZVBAE	BCNA811014G	C:CERAMIC M/L (1005) TAPE	100PF 50V J CH
C141	AB374ZVBAE	BCNB311035G	C:CERAMIC M/L (1005) TAPE	0.01UF 16V K B
C142	AB374ZVBAE	BCNB811025G	C:CERAMIC M/L (1005) TAPE	0.001u 50V K B
C143	AB374ZVBAE	BCNA812091G	C:CERAMIC M/L (1005) TAPE	2PF 50V C CH
C144	AB374ZVBAE	BCNB811025G	C:CERAMIC M/L (1005) TAPE	0.001u 50V K B
C145	AB374ZVBAE	BCNB811025G	C:CERAMIC M/L (1005) TAPE	0.001u 50V K B
C146	AB374ZVBAE	BCNB811025G	C:CERAMIC M/L (1005) TAPE	0.001u 50V K B
C147	AB374ZVBAE	BCNB111045G	C:CERAMIC M/L (1005) TAPE	0.1u 10V K B
C148	AB374ZVBAE	BCNA811014G	C:CERAMIC M/L (1005) TAPE	100PF 50V J CH
C149	AB374ZVBAE	BCNA811014G	C:CERAMIC M/L (1005) TAPE	100PF 50V J CH
C151	AB374ZVBAE	BCNB811025G	C:CERAMIC M/L (1005) TAPE	0.001u 50V K B
C152	AB374ZVBAE	BCZG0249001	C:CERAMIC(1608)	CZ-249 TMK107SD472JA-T
C153	AB374ZVBAE	BCZG0251001	C:CERAMIC(3216)	CZ-251 TMK316SD104JL-T
C154	AB374ZVBAE	BCNM661065G	C:CERAMIC M/L (3225) TAPE	10UF 35V K B C-469
C155	AB374ZVBAE	BCZG0249001	C:CERAMIC(1608)	CZ-249 TMK107SD472JA-T
C156	AB374ZVBAE	BCNA814098G	C:CERAMIC M/L (1005) TAPE	4PF 50V B CH
C157	AB374ZVBAE	BCNA813904G	C:CERAMIC M/L (1005) TAPE	39PF 50V J CH
C158	AB374ZVBAE	BCNA817091G	C:CERAMIC M/L (1005) TAPE	7PF 50V C CH
C159	AB374ZVBAE	BCNA817091G	C:CERAMIC M/L (1005) TAPE	7PF 50V C CH
C161	AB374ZVBAE	BCNA813091G	C:CERAMIC M/L (1005) TAPE	3PF 50V C CH
C162	AB374ZVBAE	BCNB811025G	C:CERAMIC M/L (1005) TAPE	0.001u 50V K B
C163	AB374ZVBAE	BCNA811014G	C:CERAMIC M/L (1005) TAPE	100PF 50V J CH
C164	AB374ZVBAE	BCNB811025G	C:CERAMIC M/L (1005) TAPE	0.001u 50V K B
C165	AB374ZVBAE	BCXT111065G	C:CERAMIC M/L (2125) TAPE	10UF 10V K B C-360
C166	AB374ZVBAE	BCNB111045G	C:CERAMIC M/L (1005) TAPE	0.1u 10V K B
C167	AB374ZVBAE	BCNB811025G	C:CERAMIC M/L (1005) TAPE	0.001u 50V K B
C168	AB374ZVBAE	BCNB811025G	C:CERAMIC M/L (1005) TAPE	0.001u 50V K B
C169	AB374ZVBAE	BCNA811002G	C:CERAMIC M/L (1005) TAPE	10PF 50V D CH
C171	AB374ZVBAE	BCNA814098G	C:CERAMIC M/L (1005) TAPE	4PF 50V B CH
C172	AB374ZVBAE	BCNA817091G	C:CERAMIC M/L (1005) TAPE	7PF 50V C CH
C173	AB374ZVBAE	BCNA815098G	C:CERAMIC M/L (1005) TAPE	5PF 50V B CH
C174	AB374ZVBAE	BCNA816091G	C:CERAMIC M/L (1005) TAPE	6PF 50V C CH
C175	AB374ZVBAE	BCNB811025G	C:CERAMIC M/L (1005) TAPE	0.001u 50V K B
C176	AB374ZVBAE	BCNB811025G	C:CERAMIC M/L (1005) TAPE	0.001u 50V K B
C177	AB374ZVBAE	BCNB811025G	C:CERAMIC M/L (1005) TAPE	0.001u 50V K B
C179	AB374ZVBAE	BCNA813304G	C:CERAMIC M/L (1005) TAPE	33PF 50V J CH
C181	AB374ZVBAE	BCNA813304G	C:CERAMIC M/L (1005) TAPE	33PF 50V J CH
C182	AB374ZVBAE	BCNB811025G	C:CERAMIC M/L (1005) TAPE	0.001u 50V K B
C183	AB374ZVBAE	BCNB811025G	C:CERAMIC M/L (1005) TAPE	0.001u 50V K B
C184	AB374ZVBAE	BCNB811025G	C:CERAMIC M/L (1005) TAPE	0.001u 50V K B
C185	AB374ZVBAE	BCNA817581G	C:CERAMIC	0.75PF 50V C CH
C186	AB374ZVBAE	BCNG813088G	C: CERAMIC M/L (1005) TAPE	0.3PF 50V B CK
C187	AB374ZVBAE	BCNA817581G	C:CERAMIC	0.75PF 50V C CH
C188	AB374ZVBAE	BCNA811591G	C:CERAMIC M/L (1005) TAPE	1.5PF 50V C CH

C189	AB374ZVBAE	BCNA811002G	C:CERAMIC M/L (1005) TAPE	10PF 50V D CH
C191	AB374ZVBAE	BCWW664786G	C:TANTALUM	SA-CA45-1V474M-RA C-488
C192	AB374ZVBAE	BCZG0249001	C:CERAMIC(1608)	CZ-249 TMK107SD472JA-T
C193	AB374ZVBAE	BCZG0353001	CZ:CAPACITOR	CZ-353 LMK212SD473JD-T
C194	AB374ZVBAE	BCNA817091G	C:CERAMIC M/L (1005) TAPE	7PF 50V C CH
C196	AB374ZVBAE	BCNB811025G	C:CERAMIC M/L (1005) TAPE	0.001u 50V K B
C197	AB374ZVBAE	BCNB901055G	C:CERAMIC M/L (1005) TAPE	1UF 6.3V K B
C198	AB374ZVBAE	BCNA816091G	C:CERAMIC M/L (1005) TAPE	6PF 50V C CH
C199	AB374ZVBAE	BCNA818092G	C:CERAMIC M/L (1005) TAPE	8PF 50V D CH
C200	AB374ZVBAE	BCNA313314G	C:CERAMIC M/L (1005) TAPE	330PF 16V J CH
C201	AB374ZVBAE	BCNA817091G	C:CERAMIC M/L (1005) TAPE	7PF 50V C CH
C202	AB374ZVBAE	BCNA813091G	C:CERAMIC M/L (1005) TAPE	3PF 50V C CH
C203	AB374ZVBAE	BCMM813304G	C:CERAMIC M/L (1608) TAPE	33PF 50V J CH
C204	AB374ZVBAE	BCNA812091G	C:CERAMIC M/L (1005) TAPE	2PF 50V C CH
C205	AB374ZVBAE	BCNA813091G	C:CERAMIC M/L (1005) TAPE	3PF 50V C CH
C206	AB374ZVBAE	BCNB811025G	C:CERAMIC M/L (1005) TAPE	0.001u 50V K B
C207	AB374ZVBAE	BCNB811025G	C:CERAMIC M/L (1005) TAPE	0.001u 50V K B
C208	AB374ZVBAE	BCNA811002G	C:CERAMIC M/L (1005) TAPE	10PF 50V D CH
C209	AB374ZVBAE	BCNB811025G	C:CERAMIC M/L (1005) TAPE	0.001u 50V K B
C211	AB374ZVBAE	BCNB811025G	C:CERAMIC M/L (1005) TAPE	0.001u 50V K B
C212	AB374ZVBAE	BCXT111065G	C:CERAMIC M/L (2125) TAPE	10UF 10V K B C-360
C213	AB374ZVBAE	BCNA811014G	C:CERAMIC M/L (1005) TAPE	100PF 50V J CH
C214	AB374ZVBAE	BCNA811014G	C:CERAMIC M/L (1005) TAPE	100PF 50V J CH
C215	AB374ZVBAE	BCNB811025G	C:CERAMIC M/L (1005) TAPE	0.001u 50V K B
C216	AB374ZVBAE	BCNB811025G	C:CERAMIC M/L (1005) TAPE	0.001u 50V K B
C217	AB374ZVBAE	BCNB811025G	C:CERAMIC M/L (1005) TAPE	0.001u 50V K B
C218	AB374ZVBAE	BCNB811025G	C:CERAMIC M/L (1005) TAPE	0.001u 50V K B
C219	AB374ZVBAE	BCNB811025G	C:CERAMIC M/L (1005) TAPE	0.001u 50V K B
C220	AB374ZVBAE	BCNB811025G	C:CERAMIC M/L (1005) TAPE	0.001u 50V K B
C221	AB374ZVBAE	BCNB811025G	C:CERAMIC M/L (1005) TAPE	0.001u 50V K B
C222	AB374ZVBAE	BCNB111045G	C:CERAMIC M/L (1005) TAPE	0.1u 10V K B
C223	AB374ZVBAE	BCNB811025G	C:CERAMIC M/L (1005) TAPE	0.001u 50V K B
C224	AB374ZVBAE	BCXT111065G	C:CERAMIC M/L (2125) TAPE	10UF 10V K B C-360
C225	AB374ZVBAE	BCNA811014G	C:CERAMIC M/L (1005) TAPE	100PF 50V J CH
C226	AB374ZVBAE	BCNB311035G	C:CERAMIC M/L (1005) TAPE	0.01UF 16V K B
C227	AB374ZVBAE	BCML311045G	C:CERAMIC M/L (1608) TAPE	0.1UF 16V K B
C228	AB374ZVBAE	BCNB116835G	C:CERAMIC M/L (1005) TAPE	0.068UF 10V K B
C229	AB374ZVBAE	BCNE813314G	C:CERAMIC M/L (1005) TAPE	330pF 50V J RH
C231	AB374ZVBAE	BCNA811014G	C:CERAMIC M/L (1005) TAPE	100PF 50V J CH
C232	AB374ZVBAE	BCNB111045G	C:CERAMIC M/L (1005) TAPE	0.1u 10V K B
C233	AB374ZVBAE	BCNA811002G	C:CERAMIC M/L (1005) TAPE	10PF 50V D CH
C234	AB374ZVBAE	BCNB111045G	C:CERAMIC M/L (1005) TAPE	0.1u 10V K B
C235	AB374ZVBAE	BCNA313314G	C:CERAMIC M/L (1005) TAPE	330PF 16V J CH
C236	AB374ZVBAE	BCNB311535G	C:CERAMIC M/L (1005) TAPE	0.015UF 16V K B
C237	AB374ZVBAE	BCNB813925G	C:CERAMIC M/L (1005) TAPE	0.0039u 50V K B
C238	AB374ZVBAE	BCXT111065G	C:CERAMIC M/L (2125) TAPE	10UF 10V K B C-360
C239	AB374ZVBAE	BCNB811025G	C:CERAMIC M/L (1005) TAPE	0.001u 50V K B
C240	AB374ZVBAE	BCNB811025G	C:CERAMIC M/L (1005) TAPE	0.001u 50V K B
C241	AB374ZVBAE	BCNB111045G	C:CERAMIC M/L (1005) TAPE	0.1u 10V K B
C242	AB374ZVBAE	BCXT111065G	C:CERAMIC M/L (2125) TAPE	10UF 10V K B C-360
C243	AB374ZVBAE	BCNB311035G	C:CERAMIC M/L (1005) TAPE	0.01UF 16V K B
C244	AB374ZVBAE	BCNB311235G	C:CERAMIC M/L (1005) TAPE	0.012UF 16V K B
C245	AB374ZVBAE	BCML311045G	C:CERAMIC M/L (1608) TAPE	0.1UF 16V K B
C247	AB374ZVBAE	BCNB113335G	C:CERAMIC M/L (1005) TAPE	0.033UF 10V K B

C248	AB374ZVBAE	BCNB311235G	C:CERAMIC M/L (1005) TAPE	0.012UF 16V K B
C249	AB374ZVBAE	BCNB311235G	C:CERAMIC M/L (1005) TAPE	0.012UF 16V K B
C251	AB374ZVBAE	BCNB811825G	C:CERAMIC M/L (1005) TAPE	0.0018u 50V K B
C252	AB374ZVBAE	BCNB112735G	C:CERAMIC M/L (1005) TAPE	0.027UF 10V K B
C253	AB374ZVBAE	BCNB901055G	C:CERAMIC M/L (1005) TAPE	1UF 6.3V K B
C254	AB374ZVBAE	BCNB111045G	C:CERAMIC M/L (1005) TAPE	0.1u 10V K B
C255	AB374ZVBAE	BCML811235G	C:CERAMIC M/L (1608) TAPE	0.012UF 50V K B
C256	AB374ZVBAE	BCNB811025G	C:CERAMIC M/L (1005) TAPE	0.001u 50V K B
C257	AB374ZVBAE	BCNB113335G	C:CERAMIC M/L (1005) TAPE	0.033UF 10V K B
C258	AB374ZVBAE	BCNB111045G	C:CERAMIC M/L (1005) TAPE	0.1u 10V K B
C259	AB374ZVBAE	BCNB111045G	C:CERAMIC M/L (1005) TAPE	0.1u 10V K B
C261	AB374ZVBAE	BCXT111065G	C:CERAMIC M/L (2125) TAPE	10UF 10V K B C-360
C262	AB374ZVBAE	BCXT111065G	C:CERAMIC M/L (2125) TAPE	10UF 10V K B C-360
C263	AB374ZVBAE	BCNB111045G	C:CERAMIC M/L (1005) TAPE	0.1u 10V K B
C264	AB374ZVBAE	BCNB111045G	C:CERAMIC M/L (1005) TAPE	0.1u 10V K B
C265	AB374ZVBAE	BCNM661065G	C:CERAMIC M/L (3225) TAPE	10UF 35V K B C-469
C266	AB374ZVBAE	BCNB114735G	C:CERAMIC M/L (1005) TAPE	0.047UF 10V K B
C267	AB374ZVBAE	BCNB111045G	C:CERAMIC M/L (1005) TAPE	0.1u 10V K B
C268	AB374ZVBAE	BCNA811514G	C:CERAMIC M/L (1005) TAPE	150PF 50V J CH
C269	AB374ZVBAE	BCXT111065G	C:CERAMIC M/L (2125) TAPE	10UF 10V K B C-360
C270	AB374ZVBAE	BCNB811025G	C:CERAMIC M/L (1005) TAPE	0.001u 50V K B
C271	AB374ZVBAE	BCNB111045G	C:CERAMIC M/L (1005) TAPE	0.1u 10V K B
C272	AB374ZVBAE	BCNB311035G	C:CERAMIC M/L (1005) TAPE	0.01UF 16V K B
C273	AB374ZVBAE	BCNB311035G	C:CERAMIC M/L (1005) TAPE	0.01UF 16V K B
C274	AB374ZVBAE	BCNB311035G	C:CERAMIC M/L (1005) TAPE	0.01UF 16V K B
C275	AB374ZVBAE	BCNB901055G	C:CERAMIC M/L (1005) TAPE	1UF 6.3V K B
C276	AB374ZVBAE	BCML811045G	C:CERAMIC M/L (1608) TAPE	0.1UF 50V K B
C277	AB374ZVBAE	BCNM661065G	C:CERAMIC M/L (3225) TAPE	10UF 35V K B C-469
C278	AB374ZVBAE	BCNA812214G	C:CERAMIC M/L (1005) TAPE	220PF 50V J CH
C279	AB374ZVBAE	BCML811045G	C:CERAMIC M/L (1608) TAPE	0.1UF 50V K B
C280	AB374ZVBAE	BCNB811025G	C:CERAMIC M/L (1005) TAPE	0.001u 50V K B
C281	AB374ZVBAE	BCNB111045G	C:CERAMIC M/L (1005) TAPE	0.1u 10V K B
C282	AB374ZVBAE	BCYP114766G	C:CERAMIC M/L (3216)	47UF 10V M B C-392
C283	AB374ZVBAE	BCNB901055G	C:CERAMIC M/L (1005) TAPE	1UF 6.3V K B
C284	AB374ZVBAE	BCXT111065G	C:CERAMIC M/L (2125) TAPE	10UF 10V K B C-360
C285	AB374ZVBAE	BCNB901055G	C:CERAMIC M/L (1005) TAPE	1UF 6.3V K B
C286	AB374ZVBAE	BCNB111045G	C:CERAMIC M/L (1005) TAPE	0.1u 10V K B
C288	AB374ZVBAE	BCNB901055G	C:CERAMIC M/L (1005) TAPE	1UF 6.3V K B
C289	AB374ZVBAE	BCNB901055G	C:CERAMIC M/L (1005) TAPE	1UF 6.3V K B
C301	AB374ZVBBE	BCNB811025G	C:CERAMIC M/L (1005) TAPE	0.001u 50V K B
C302	AB374ZVBBE	BCNB111045G	C:CERAMIC M/L (1005) TAPE	0.1u 10V K B
C303	AB374ZVBBE	BCNB811025G	C:CERAMIC M/L (1005) TAPE	0.001u 50V K B
C304	AB374ZVBBE	BCNB811025G	C:CERAMIC M/L (1005) TAPE	0.001u 50V K B
C305	AB374ZVBBE	BCNB111045G	C:CERAMIC M/L (1005) TAPE	0.1u 10V K B
C306	AB374ZVBBE	BCNM661065G	C:CERAMIC M/L (3225) TAPE	10UF 35V K B C-469
C307	AB374ZVBBE	BCNB111045G	C:CERAMIC M/L (1005) TAPE	0.1u 10V K B
C308	AB374ZVBBE	BCJY901016G	C:ELECTROLYTIC	100UF 6.3V M C-442
C309	AB374ZVBBE	BCML112295G	C:CERAMIC M/L (1608) TAPE	2.2UF 10V K B
C310	AB374ZVBBE	BCJY902216G	C:ELECTROLYTIC	220UF 6.3V M C-442
C311	AB374ZVBBE	BCNB811025G	C:CERAMIC M/L (1005) TAPE	0.001u 50V K B
C312	AB374ZVBBE	BCXT111065G	C:CERAMIC M/L (2125) TAPE	10UF 10V K B C-360
C313	AB374ZVBBE	BCJY902216G	C:ELECTROLYTIC	220UF 6.3V M C-442
C314	AB374ZVBBE	BCNB111045G	C:CERAMIC M/L (1005) TAPE	0.1u 10V K B
C315	AB374ZVBBE	BCXT111065G	C:CERAMIC M/L (2125) TAPE	10UF 10V K B C-360

C316	AB374ZVBBE	BCNB111045G	C:CERAMIC M/L (1005) TAPE	0.1u 10V K B
C317	AB374ZVBBE	BCNB811025G	C:CERAMIC M/L (1005) TAPE	0.001u 50V K B
C318	AB374ZVBBE	BCXT111065G	C:CERAMIC M/L (2125) TAPE	10UF 10V K B C-360
C319	AB374ZVBBE	BCNB111045G	C:CERAMIC M/L (1005) TAPE	0.1u 10V K B
C321	AB374ZVBBE	BCNB811025G	C:CERAMIC M/L (1005) TAPE	0.001u 50V K B
C322	AB374ZVBBE	BCNB111045G	C:CERAMIC M/L (1005) TAPE	0.1u 10V K B
C323	AB374ZVBBE	BCNB514725G	C:CERAMIC M/L (1005) TAPE	0.0047UF 25V K B
C324	AB374ZVBBE	BCNB811025G	C:CERAMIC M/L (1005) TAPE	0.001u 50V K B
C327	AB374ZVBBE	BCNB811025G	C:CERAMIC M/L (1005) TAPE	0.001u 50V K B
C328	AB374ZVBBE	BCNB111045G	C:CERAMIC M/L (1005) TAPE	0.1u 10V K B
C331	AB374ZVBBE	BCNB111045G	C:CERAMIC M/L (1005) TAPE	0.1u 10V K B
C332	AB374ZVBBE	BCNB811025G	C:CERAMIC M/L (1005) TAPE	0.001u 50V K B
C333	AB374ZVBBE	BCML811045G	C:CERAMIC M/L (1608) TAPE	0.1UF 50V K B
C334	AB374ZVBBE	BCNB901055G	C:CERAMIC M/L (1005) TAPE	1UF 6.3V K B
C335	AB374ZVBBE	BCNB901055G	C:CERAMIC M/L (1005) TAPE	1UF 6.3V K B
C336	AB374ZVBBE	BCNB811025G	C:CERAMIC M/L (1005) TAPE	0.001u 50V K B
C351	AB374ZVBBE	BCNA811014G	C:CERAMIC M/L (1005) TAPE	100PF 50V J CH
C352	AB374ZVBBE	BCNB904745G	C:CERAMIC M/L (1005) TAPE	0.47UF 6.3V K B
C353	AB374ZVBBE	BCML901055G	C:CERAMIC M/L (1608) TAPE	1UF 6.3V K B
C354	AB374ZVBBE	BCNB111045G	C:CERAMIC M/L (1005) TAPE	0.1u 10V K B
C355	AB374ZVBBE	BCNB818215G	C:CERAMIC M/L (1005) TAPE	820p 50V K B
C356	AB374ZVBBE	BCNA814704G	C:CERAMIC M/L (1005) TAPE	47PF 50V J CH
C357	AB374ZVBBE	BCNB813925G	C:CERAMIC M/L (1005) TAPE	0.0039u 50V K B
C358	AB374ZVBBE	BCNB111045G	C:CERAMIC M/L (1005) TAPE	0.1u 10V K B
C359	AB374ZVBBE	BCNB811025G	C:CERAMIC M/L (1005) TAPE	0.001u 50V K B
C361	AB374ZVBBE	BCNA811002G	C:CERAMIC M/L (1005) TAPE	10PF 50V D CH
C363	AB374ZVBBE	BCNB811025G	C:CERAMIC M/L (1005) TAPE	0.001u 50V K B
C364	AB374ZVBBE	BCNA811514G	C:CERAMIC M/L (1005) TAPE	150PF 50V J CH
C365	AB374ZVBBE	BCNA811514G	C:CERAMIC M/L (1005) TAPE	150PF 50V J CH
C366	AB374ZVBBE	BCNB111045G	C:CERAMIC M/L (1005) TAPE	0.1u 10V K B
C367	AB374ZVBBE	BCNB901055G	C:CERAMIC M/L (1005) TAPE	1UF 6.3V K B
C401	AB374ZVBBE	BCNB901055G	C:CERAMIC M/L (1005) TAPE	1UF 6.3V K B
C402	AB374ZVBBE	BCNB901055G	C:CERAMIC M/L (1005) TAPE	1UF 6.3V K B
C403	AB374ZVBBE	BCML904755G	C:CERAMIC M/L (1608) TAPE	4.7UF 6.3V K B
C404	AB374ZVBBE	BCNA811091G	C:CERAMIC M/L (1005) TAPE	1p 50V C CH
C405	AB374ZVBBE	BCNB901055G	C:CERAMIC M/L (1005) TAPE	1UF 6.3V K B
C406	AB374ZVBBE	BCNB901055G	C:CERAMIC M/L (1005) TAPE	1UF 6.3V K B
C407	AB374ZVBBE	BCNB901055G	C:CERAMIC M/L (1005) TAPE	1UF 6.3V K B
C408	AB374ZVBBE	BCNA813091G	C:CERAMIC M/L (1005) TAPE	3PF 50V C CH
D001	AB374ZVBAE	BDAG1264001	DIODE	DA-1264 1SV308(TPH3_F)
D002	AB374ZVBAE	BDAG1370001	DIODE	KDS114E-RTK/PM
D003	AB374ZVBAE	BDAG1264001	DIODE	DA-1264 1SV308(TPH3_F)
D004	AB374ZVBAE	BDAG1264001	DIODE	DA-1264 1SV308(TPH3_F)
D005	AB374ZVBAE	BDAG1370001	DIODE	KDS114E-RTK/PM
D006	AB374ZVBAE	BDAG1264001	DIODE	DA-1264 1SV308(TPH3_F)
D007	AB374ZVBAE	BDAG1370001	DIODE	KDS114E-RTK/PM
D008	AB374ZVBAE	BDAG1264001	DIODE	DA-1264 1SV308(TPH3_F)
D009	AB374ZVBAE	BDAG1370001	DIODE	KDS114E-RTK/PM
D011	AB374ZVBAE	BDAG1370001	DIODE	KDS114E-RTK/PM
D012	AB374ZVBAE	BDAG1370001	DIODE	KDS114E-RTK/PM
D013	AB374ZVBAE	BDAG1370001	DIODE	KDS114E-RTK/PM
D014	AB374ZVBAE	BDAG1370001	DIODE	KDS114E-RTK/PM
D015	AB374ZVBAE	BDAG1370001	DIODE	KDS114E-RTK/PM
D016	AB374ZVBAE	BDAG1370001	DIODE	KDS114E-RTK/PM

D017	AB374ZVBAE	BDAG1370001	DIODE	KDS114E-RTK/PM
D018	AB374ZVBAE	BDAG1264001	DIODE	DA-1264 1SV308(TPH3_F)
D019	AB374ZVBAE	BDAG1264001	DIODE	DA-1264 1SV308(TPH3_F)
D021	AB374ZVBAE	BDAG1370001	DIODE	KDS114E-RTK/PM
D022	AB374ZVBAE	BDAG1370001	DIODE	KDS114E-RTK/PM
D023	AB374ZVBAE	BDAG1370001	DIODE	KDS114E-RTK/PM
D024	AB374ZVBAE	BDAG1370001	DIODE	KDS114E-RTK/PM
D025	AB374ZVBAE	BDAG1370001	DIODE	KDS114E-RTK/PM
D026	AB374ZVBAE	BDAG1660001	DIODE:VARICAP CHIP	RKV501KJP1Q
D027	AB374ZVBAE	BDAG1657001	DIODE:VARICAP CHIP	RKV502KJP1Q
D028	AB374ZVBAE	BDAG1263001	DIODE:VARICAP	1SV323(TPH3_F)
D029	AB374ZVBAE	BDAG1264001	DIODE	DA-1264 1SV308(TPH3_F)
D031	AB374ZVBAE	BDAG1264001	DIODE	DA-1264 1SV308(TPH3_F)
D032	AB374ZVBAE	BDAG1626003	DIODE:ZENER	LUDZS6.2BT1G
D033	AB374ZVBAE	BDAG1626003	DIODE:ZENER	LUDZS6.2BT1G
D034	AB374ZVBAE	BDAG1677001	DIODE:SBD CHIP	1N5818WB
D035	AB374ZVBAE	BDAG1626003	DIODE:ZENER	LUDZS6.2BT1G
D301	AB374ZVBBE	BDAG1626003	DIODE:ZENER	LUDZS6.2BT1G
D303	AB374ZVBBE	BDAG1627001	DIODE	L1SS400T1G
D304	AB374ZVBBE	BDAG1012001	DIODE	RR264M-400 TR
D305	AB374ZVBBE	BDAG1627001	DIODE	L1SS400T1G
D306	AB374ZVBBE	BDAG1627001	DIODE	L1SS400T1G
D307	AB374ZVBBE	BDAG1627001	DIODE	L1SS400T1G
D308	AB374ZVBBE	BDAG1627001	DIODE	L1SS400T1G
D313	AB374ZVBBE	BDAG1574001	DIODE:SBD	1SS404 TPH3-F
D315	AB374ZVBBE	BDAG1465001	DIODE:LED	LTST-S220KFKT
D316	AB374ZVBBE	BDAG1465001	DIODE:LED	LTST-S220KFKT
D317	AB374ZVBBE	BDAG1465001	DIODE:LED	LTST-S220KFKT
J001	AB374ZVBAE	BJKG1156001	PHONE JACK	JK-1156 EJS-4-3335
J002	AB374ZVBAE	BJKG1492040	JACK	JK-1492 40RF-JMCS-G-1B-TF
J301	AB374ZVBBE	BJKG1694001	JACK:USB	K-1694 JBMIN-B1M05F-4B5N-TP
J302	AB374ZVBBE	BJKG1493040	JACK	JK-1493 40P9.0-JMCS-G-B-TF
J601	AB374ZVBYE	BJKG1148001	JACK:BNC	JK-1148 NCC1228
L001	AB374ZVBAE	BLZG0392001	INDUCTOR:MOLDED CHIP	LZ-392 HZ1005B152TF
L002	AB374ZVBAE	BLZG0341686	INDUCTOR:MOLDED CHIP	Z-341 SDCL1608C6N8JTDF
L003	AB374ZVBAE	BLZG0341107	INDUCTOR:MOLDED CHIP	Z-341 SDCL1608C10NJTDF
L004	AB374ZVBAE	BLZG0341107	INDUCTOR:MOLDED CHIP	Z-341 SDCL1608C10NJTDF
L005	AB374ZVBAE	BLZG0341686	INDUCTOR:MOLDED CHIP	Z-341 SDCL1608C6N8JTDF
L006	AB374ZVBAE	BLZG0341187	INDUCTOR:MOLDED CHIP	Z-341 SDCL1608C18NJTDF
L007	AB374ZVBAE	BLZG0341157	INDUCTOR:MOLDED CHIP	Z-341 SDCL1608C15NJTDF
L008	AB374ZVBAE	BLZG0341187	INDUCTOR:MOLDED CHIP	Z-341 SDCL1608C18NJTDF
L009	AB374ZVBAE	BLZG0341277	INDUCTOR:MOLDED CHIP	Z-341 SDCL1608C27NJTDF
L011	AB374ZVBAE	BLZG0341277	INDUCTOR:MOLDED CHIP	Z-341 SDCL1608C27NJTDF
L012	AB374ZVBAE	BLZG0341337	INDUCTOR:MOLDED CHIP	Z-341 SDCL1608C33NJTDF
L013	AB374ZVBAE	BLZG0341337	INDUCTOR:MOLDED CHIP	Z-341 SDCL1608C33NJTDF
L014	AB374ZVBAE	BLZG0341337	INDUCTOR:MOLDED CHIP	Z-341 SDCL1608C33NJTDF
L015	AB374ZVBAE	BLZG0341277	INDUCTOR:MOLDED CHIP	Z-341 SDCL1608C27NJTDF
L016	AB374ZVBAE	BLZG0341277	INDUCTOR:MOLDED CHIP	Z-341 SDCL1608C27NJTDF
L017	AB374ZVBAE	BLZG0341567	INDUCTOR:MOLDED CHIP	Z-341 SDCL1608C56NJTDF
L018	AB374ZVBAE	BLZG0341477	INDUCTOR:MOLDED CHIP	Z-341 SDCL1608C47NJTDF
L019	AB374ZVBAE	BLZG0341477	INDUCTOR:MOLDED CHIP	Z-341 SDCL1608C47NJTDF
L021	AB374ZVBAE	BLZG0341567	INDUCTOR:MOLDED CHIP	Z-341 SDCL1608C56NJTDF
L023	AB374ZVBAE	BLZG0341827	INDUCTOR:MOLDED CHIP	Z-341 SDCL1608C82NJTDF
L024	AB374ZVBAE	BLZG0341567	INDUCTOR:MOLDED CHIP	Z-341 SDCL1608C56NJTDF

L025	AB374ZVBAE	BLZG0341687	INDUCTOR:MOLDED CHIP	Z-341 SDCL1608C68NJTDF
L026	AB374ZVBAE	BLZG0341567	INDUCTOR:MOLDED CHIP	Z-341 SDCL1608C56NJTDF
L027	AB374ZVBAE	BLZG0341278	INDUCTOR:MOLDED CHIP	Z-341 SDCL1608CR27JTDF
L028	AB374ZVBAE	BLZG0341278	INDUCTOR:MOLDED CHIP	Z-341 SDCL1608CR27JTDF
L029	AB374ZVBAE	BLZG0341128	INDUCTOR :MOLDED CHIP	Z-341 SDCL1608CR12JTDF
L031	AB374ZVBAE	BLZG0341108	INDUCTOR:MOLDED CHIP	Z-341 SDCL1608CR10JTDF
L032	AB374ZVBAE	BLZG0336476	INDUCTOR:MOLDED	-336 SDCL1005C4N7STDF 4.7NH
L033	AB374ZVBAE	BLZG0336187	INDUCTOR:MOLDED	-336 SDCL1005C18NJTDF 18NH
L034	AB374ZVBAE	BLZG0336687	INDUCTOR:MOLDED	-336 SDCL1005C68NJTDF 68NH
L035	AB374ZVBAE	BLZG0336687	INDUCTOR:MOLDED	-336 SDCL1005C68NJTDF 68NH
L036	AB374ZVBAE	BLZG0336108	INDUCTOR:MOLDED	-336 SDCL1005CR10JTDF 100NH
L037	AB374ZVBAE	BLZG0336108	INDUCTOR:MOLDED	-336 SDCL1005CR10JTDF 100NH
L038	AB374ZVBAE	BLZG0226568	INDUCTOR:MOLDED CHIP	LZ-226 SGM1608GR56K T
L039	AB374ZVBAE	BLZG0336127	INDUCTOR:MOLDED	-336 SDCL1005C12NJTDF 12NH
L041	AB374ZVBAE	BLZG0341187	INDUCTOR:MOLDED CHIP	Z-341 SDCL1608C18NJTDF
L042	AB374ZVBAE	BLZG0350227	INDUCTOR:WIND CHIP TAPE	Z-350 SDWL1608C22NGSTF
L043	AB374ZVBAE	BLZG0403686	INDUCTOR:MOLDED CHIP	-403 SDWL1608C6N8CSTFM11
L044	AB374ZVBAE	BLZG0336187	INDUCTOR:MOLDED	-336 SDCL1005C18NJTDF 18NH
L045	AB374ZVBAE	BLZG0336187	INDUCTOR:MOLDED	-336 SDCL1005C18NJTDF 18NH
L046	AB374ZVBAE	BLZG0350337	INDUCTOR:WIND CHIP TAPE	Z-350 SDWL1608C33NGSTF
L047	AB374ZVBAE	BLZG0350477	INDUCTOR:WIND CHIP TAPE	Z-350 SDWL1608C47NGSTF
L049	AB374ZVBAE	BLFG0337001	COIL	LF-337 K5-N1 R12Y402Y
L051	AB374ZVBAE	BLZG0356470	INDUCTOR:WIND SMD TAPE	Z-356 47UH SWPA3015S470MT
L052	AB374ZVBAE	BLZG0378001	Z:INDUCTOR:MOLDED CHIP	LZ-378 GZ1608D601TF
L054	AB374ZVBAE	BLZG0392001	INDUCTOR:MOLDED CHIP	LZ-392 HZ1005B152TF
L055	AB374ZVBAE	BLZG0378001	Z:INDUCTOR:MOLDED CHIP	LZ-378 GZ1608D601TF
L056	AB374ZVBAE	BLZG0378001	Z:INDUCTOR:MOLDED CHIP	LZ-378 GZ1608D601TF
L057	AB374ZVBAE	BLZG0378001	Z:INDUCTOR:MOLDED CHIP	LZ-378 GZ1608D601TF
L058	AB374ZVBAE	BLZG0392001	INDUCTOR:MOLDED CHIP	LZ-392 HZ1005B152TF
L301	AB374ZVBBE	BLDG0359001	LD:COIL	D-359 TCE1210-900-2P-T000
L302	AB374ZVBBE	BLZG0357100	INDUCTOR	Z-357 SWPA4020S100MT
L303	AB374ZVBBE	BLZG0357100	INDUCTOR	Z-357 SWPA4020S100MT
L304	AB374ZVBBE	BLZG0378001	Z:INDUCTOR:MOLDED CHIP	LZ-378 GZ1608D601TF
L305	AB374ZVBBE	BLZG0378001	Z:INDUCTOR:MOLDED CHIP	LZ-378 GZ1608D601TF
Q001	AB374ZVBAE	BDBN1150001	TRANSISTOR	DB-1150 BFP420 E-6327
Q002	AB374ZVBAE	BDBL5065124	TRANSISTOR	DB-1169 2SC5065-Y(TE85R_F)
Q003	AB374ZVBAE	BDBN1345001	TRANSISTOR	DB-1345 L2SC2412KRLT1G
Q004	AB374ZVBAE	BDBN1345001	TRANSISTOR	DB-1345 L2SC2412KRLT1G
Q005	AB374ZVBAE	BDBN1345001	TRANSISTOR	DB-1345 L2SC2412KRLT1G
Q006	AB374ZVBAE	BDBL5065124	TRANSISTOR	DB-1169 2SC5065-Y(TE85R_F)
Q007	AB374ZVBAE	BDBN1290001	TRANSISTOR	DB-1290 LMBT3906LT1G
Q008	AB374ZVBAE	BDBL5006339	TRANSISTOR	DB-762 2SC5006-FB-T1
Q009	AB374ZVBAE	BDBN1354001	TRANSISTOR	DB-1354 KTC4075E-Y
Q011	AB374ZVBAE	BDBL5006339	TRANSISTOR	DB-762 2SC5006-FB-T1
Q012	AB374ZVBAE	BDBN1354001	TRANSISTOR	DB-1354 KTC4075E-Y
Q013	AB374ZVBAE	BDBN1376001	TRANSISTOR	DB-1376 UPA800T-T1-A
Q014	AB374ZVBAE	BDCK0880303	TRANSISTOR	DC-059 2SK880-GR(TE85L_F)
Q015	AB374ZVBAE	BDBL4116303	TRANSISTOR	DB-763 2SC4116-GR(TE85L_F)
Q016	AB374ZVBAE	BDBL5006339	TRANSISTOR	DB-762 2SC5006-FB-T1
Q017	AB374ZVBAE	BDBN1376001	TRANSISTOR	DB-1376 UPA800T-T1-A
Q018	AB374ZVBAE	BDBN1354001	TRANSISTOR	DB-1354 KTC4075E-Y
Q022	AB374ZVBAE	BDBN1292001	TRANSISTOR	DB-1292 LMBT3904LT1G
Q023	AB374ZVBAE	BDBN1292001	TRANSISTOR	DB-1292 LMBT3904LT1G
Q024	AB374ZVBAE	BDBN1292001	TRANSISTOR	DB-1292 LMBT3904LT1G

Q025	AB374ZVBAE	BDBN1292001	TRANSISTOR	DB-1292 LMBT3904LT1G
Q026	AB374ZVBAE	BDBN1292001	TRANSISTOR	DB-1292 LMBT3904LT1G
Q027	AB374ZVBAE	BDBN1292001	TRANSISTOR	DB-1292 LMBT3904LT1G
Q028	AB374ZVBAE	BDBN1292001	TRANSISTOR	DB-1292 LMBT3904LT1G
Q029	AB374ZVBAE	BDBL4116303	TRANSISTOR	DB-763 2SC4116-GR(TE85L_F
Q031	AB374ZVBAE	BDBN1290001	TRANSISTOR	DB-1290 LMBT3906LT1G
Q032	AB374ZVBAE	BDBN1292001	TRANSISTOR	DB-1292 LMBT3904LT1G
Q033	AB374ZVBAE	BDBN1292001	TRANSISTOR	DB-1292 LMBT3904LT1G
Q301	AB374ZVBBE	BDBN1379001	TRANSISTOR	DB-1379 ST2SB1424RU
Q302	AB374ZVBBE	BDBN1292001	TRANSISTOR	DB-1292 LMBT3904LT1G
Q303	AB374ZVBBE	BDCN0364001	FIELD EFFECT TRANSISTOR	DC-364 RAF040P01TCL
Q304	AB374ZVBBE	BDBN1292001	TRANSISTOR	DB-1292 LMBT3904LT1G
Q305	AB374ZVBBE	BDBN1290001	TRANSISTOR	DB-1290 LMBT3906LT1G
Q306	AB374ZVBBE	BDBN1292001	TRANSISTOR	DB-1292 LMBT3904LT1G
Q307	AB374ZVBBE	BDBN1290001	TRANSISTOR	DB-1290 LMBT3906LT1G
Q308	AB374ZVBBE	BDBN1292001	TRANSISTOR	DB-1292 LMBT3904LT1G
Q309	AB374ZVBBE	BDBN1290001	TRANSISTOR	DB-1290 LMBT3906LT1G
R001	AB374ZVBAE	BRFA161024G	R:CARBON FIXED CHIP(1005)	1K 1/16W J 1005 TAPE
R002	AB374ZVBAE	BRFA161524G	R:CARBON FIXED CHIP(1005)	1.5K 1/16W J 1005 TAPE
R003	AB374ZVBAE	BRFA166824G	R:CARBON FIXED CHIP(1005)	6.8K 1/16W J 1005 TAPE
R004	AB374ZVBAE	BRFA162224G	R:CARBON FIXED CHIP(1005)	2.2K 1/16W J 1005 TAPE
R005	AB374ZVBAE	BRFA161014G	R:CARBON FIXED CHIP(1005)	100 1/16W J 1005 TAPE
R006	AB374ZVBAE	BRFA161524G	R:CARBON FIXED CHIP(1005)	1.5K 1/16W J 1005 TAPE
R007	AB374ZVBAE	BRFA163924G	R:CARBON FIXED CHIP(1005)	3.9K 1/16W J 1005 TAPE
R008	AB374ZVBAE	BRFA161024G	R:CARBON FIXED CHIP(1005)	1K 1/16W J 1005 TAPE
R009	AB374ZVBAE	BRFA162224G	R:CARBON FIXED CHIP(1005)	2.2K 1/16W J 1005 TAPE
R011	AB374ZVBAE	BRFA161014G	R:CARBON FIXED CHIP(1005)	100 1/16W J 1005 TAPE
R012	AB374ZVBAE	BRFA161524G	R:CARBON FIXED CHIP(1005)	1.5K 1/16W J 1005 TAPE
R013	AB374ZVBAE	BRFA163324G	R:CARBON FIXED CHIP(1005)	3.3K 1/16W J 1005 TAPE
R014	AB374ZVBAE	BRFA161024G	R:CARBON FIXED CHIP(1005)	1K 1/16W J 1005 TAPE
R015	AB374ZVBAE	BRFA161024G	R:CARBON FIXED CHIP(1005)	1K 1/16W J 1005 TAPE
R016	AB374ZVBAE	BRFA161524G	R:CARBON FIXED CHIP(1005)	1.5K 1/16W J 1005 TAPE
R017	AB374ZVBAE	BRFA161534G	R:CARBON FIXED CHIP(1005)	15K 1/16W J 1005 TAPE
R018	AB374ZVBAE	BRFA161034G	R:CARBON FIXED CHIP(1005)	10K 1/16W J 1005 TAPE
R019	AB374ZVBAE	BRFA161024G	R:CARBON FIXED CHIP(1005)	1K 1/16W J 1005 TAPE
R021	AB374ZVBAE	BRFA161524G	R:CARBON FIXED CHIP(1005)	1.5K 1/16W J 1005 TAPE
R022	AB374ZVBAE	BRFA161534G	R:CARBON FIXED CHIP(1005)	15K 1/16W J 1005 TAPE
R023	AB374ZVBAE	BRFA161034G	R:CARBON FIXED CHIP(1005)	10K 1/16W J 1005 TAPE
R024	AB374ZVBAE	BRFA161024G	R:CARBON FIXED CHIP(1005)	1K 1/16W J 1005 TAPE
R025	AB374ZVBAE	BRFA161524G	R:CARBON FIXED CHIP(1005)	1.5K 1/16W J 1005 TAPE
R026	AB374ZVBAE	BRFA161534G	R:CARBON FIXED CHIP(1005)	15K 1/16W J 1005 TAPE
R027	AB374ZVBAE	BRFA161034G	R:CARBON FIXED CHIP(1005)	10K 1/16W J 1005 TAPE
R028	AB374ZVBAE	BRFA161024G	R:CARBON FIXED CHIP(1005)	1K 1/16W J 1005 TAPE
R029	AB374ZVBAE	BRFA161524G	R:CARBON FIXED CHIP(1005)	1.5K 1/16W J 1005 TAPE
R031	AB374ZVBAE	BRFA161034G	R:CARBON FIXED CHIP(1005)	10K 1/16W J 1005 TAPE
R032	AB374ZVBAE	BRFA162234G	R:CARBON FIXED CHIP(1005)	22K 1/16W J 1005 TAPE
R033	AB374ZVBAE	BRFA161524G	R:CARBON FIXED CHIP(1005)	1.5K 1/16W J 1005 TAPE
R034	AB374ZVBAE	BRFA161524G	R:CARBON FIXED CHIP(1005)	1.5K 1/16W J 1005 TAPE
R035	AB374ZVBAE	BRFA165694G	R:CARBON FIXED CHIP(1005)	5.6 1/16W J 1005 TAPE
R036	AB374ZVBAE	BRFA164704G	R:CARBON FIXED CHIP(1005)	47 1/16W J 1005 TAPE
R037	AB374ZVBAE	BRFA164714G	R:CARBON FIXED CHIP(1005)	470 1/16W J 1005 TAPE
R038	AB374ZVBAE	BRFA166804G	R:CARBON FIXED CHIP(1005)	68 1/16W J 1005 TAPE
R039	AB374ZVBAE	BRFA162724G	R:CARBON FIXED CHIP(1005)	2.7K 1/16W J 1005 TAPE
R041	AB374ZVBAE	BRFA163324G	R:CARBON FIXED CHIP(1005)	3.3K 1/16W J 1005 TAPE

R042	AB374ZVBAE	BRFA163324G	R:CARBON FIXED CHIP(1005)	3.3K 1/16W J 1005 TAPE
R043	AB374ZVBAE	BRFA161004G	R:CARBON FIXED CHIP(1005)	10 1/16W J 1005 TAPE
R044	AB374ZVBAE	BRFA161814G	R:CARBON FIXED CHIP(1005)	180 1/16W J 1005 TAPE
R045	AB374ZVBAE	BRFA161834G	R:CARBON FIXED CHIP(1005)	18K 1/16W J 1005 TAPE
R046	AB374ZVBAE	BRFA162234G	R:CARBON FIXED CHIP(1005)	22K 1/16W J 1005 TAPE
R047	AB374ZVBAE	BRFA163334G	R:CARBON FIXED CHIP(1005)	33K 1/16W J 1005 TAPE
R048	AB374ZVBAE	BRFA163334G	R:CARBON FIXED CHIP(1005)	33K 1/16W J 1005 TAPE
R049	AB374ZVBAE	BRFA161044G	R:CARBON FIXED CHIP(1005)	100K 1/16W J 1005 TAPE
R051	AB374ZVBAE	BRFA161024G	R:CARBON FIXED CHIP(1005)	1K 1/16W J 1005 TAPE
R052	AB374ZVBAE	BRFA164734G	R:CARBON FIXED CHIP(1005)	47K 1/16W J 1005 TAPE
R053	AB374ZVBAE	BRFA162714G	R:CARBON FIXED CHIP(1005)	270 1/16W J 1005 TAPE
R054	AB374ZVBAE	BRFA161004G	R:CARBON FIXED CHIP(1005)	10 1/16W J 1005 TAPE
R055	AB374ZVBAE	BRFA160004G	R:CARBON FIXED CHIP(1005)	0 1/16W J 1005 TAPE
R056	AB374ZVBAE	BRFA163334G	R:CARBON FIXED CHIP(1005)	33K 1/16W J 1005 TAPE
R057	AB374ZVBAE	BRFA162234G	R:CARBON FIXED CHIP(1005)	22K 1/16W J 1005 TAPE
R058	AB374ZVBAE	BRFA161024G	R:CARBON FIXED CHIP(1005)	1K 1/16W J 1005 TAPE
R059	AB374ZVBAE	BRFA165614G	R:CARBON FIXED CHIP(1005)	560 1/16W J 1005 TAPE
R061	AB374ZVBAE	BRFA161024G	R:CARBON FIXED CHIP(1005)	1K 1/16W J 1005 TAPE
R062	AB374ZVBAE	BRFA163334G	R:CARBON FIXED CHIP(1005)	33K 1/16W J 1005 TAPE
R064	AB374ZVBAE	BRFA161834G	R:CARBON FIXED CHIP(1005)	18K 1/16W J 1005 TAPE
R065	AB374ZVBAE	BRFA161034G	R:CARBON FIXED CHIP(1005)	10K 1/16W J 1005 TAPE
R066	AB374ZVBAE	BRFA164734G	R:CARBON FIXED CHIP(1005)	47K 1/16W J 1005 TAPE
R067	AB374ZVBAE	BRFA161524G	R:CARBON FIXED CHIP(1005)	1.5K 1/16W J 1005 TAPE
R068	AB374ZVBAE	BRFA162204G	R:CARBON FIXED CHIP(1005)	22 1/16W J 1005 TAPE
R069	AB374ZVBAE	BRFA162204G	R:CARBON FIXED CHIP(1005)	22 1/16W J 1005 TAPE
R071	AB374ZVBAE	BRFA163324G	R:CARBON FIXED CHIP(1005)	3.3K 1/16W J 1005 TAPE
R072	AB374ZVBAE	BRFA168294G	R:CARBON FIXED CHIP(1005)	8.2 1/16W J 1005 TAPE
R073	AB374ZVBAE	BRFA168294G	R:CARBON FIXED CHIP(1005)	8.2 1/16W J 1005 TAPE
R074	AB374ZVBAE	BRFA162214G	R:CARBON FIXED CHIP(1005)	220 1/16W J 1005 TAPE
R075	AB374ZVBAE	BRFA161014G	R:CARBON FIXED CHIP(1005)	100 1/16W J 1005 TAPE
R076	AB374ZVBAE	BRFA162714G	R:CARBON FIXED CHIP(1005)	270 1/16W J 1005 TAPE
R077	AB374ZVBAE	BRFA161804G	R:CARBON FIXED CHIP(1005)	18 1/16W J 1005 TAPE
R078	AB374ZVBAE	BRFA162714G	R:CARBON FIXED CHIP(1005)	270 1/16W J 1005 TAPE
R079	AB374ZVBAE	BRFA162724G	R:CARBON FIXED CHIP(1005)	2.7K 1/16W J 1005 TAPE
R081	AB374ZVBAE	BRFA163324G	R:CARBON FIXED CHIP(1005)	3.3K 1/16W J 1005 TAPE
R082	AB374ZVBAE	BRFA162724G	R:CARBON FIXED CHIP(1005)	2.7K 1/16W J 1005 TAPE
R083	AB374ZVBAE	BRFA161824G	R:CARBON FIXED CHIP(1005)	1.8K 1/16W J 1005 TAPE
R084	AB374ZVBAE	BRFA161824G	R:CARBON FIXED CHIP(1005)	1.8K 1/16W J 1005 TAPE
R085	AB374ZVBAE	BRFA164704G	R:CARBON FIXED CHIP(1005)	47 1/16W J 1005 TAPE
R086	AB374ZVBAE	BRFA163324G	R:CARBON FIXED CHIP(1005)	3.3K 1/16W J 1005 TAPE
R087	AB374ZVBAE	BRFA163324G	R:CARBON FIXED CHIP(1005)	3.3K 1/16W J 1005 TAPE
R088	AB374ZVBAE	BRFA163324G	R:CARBON FIXED CHIP(1005)	3.3K 1/16W J 1005 TAPE
R089	AB374ZVBAE	BRFA166894G	R:CARBON FIXED CHIP(1005)	6.8 1/16W J 1005 TAPE
R091	AB374ZVBAE	BRFA168214G	R:CARBON FIXED CHIP(1005)	820 1/16W J 1005 TAPE
R092	AB374ZVBAE	BRFC160004G	R:CARBON FIXED CHIP(1608)	0 1/16W J TAPE
R093	AB374ZVBAE	BRFA168214G	R:CARBON FIXED CHIP(1005)	820 1/16W J 1005 TAPE
R094	AB374ZVBAE	BRFA161824G	R:CARBON FIXED CHIP(1005)	1.8K 1/16W J 1005 TAPE
R095	AB374ZVBAE	BRFA163324G	R:CARBON FIXED CHIP(1005)	3.3K 1/16W J 1005 TAPE
R096	AB374ZVBAE	BRFA162714G	R:CARBON FIXED CHIP(1005)	270 1/16W J 1005 TAPE
R097	AB374ZVBAE	BRFA161044G	R:CARBON FIXED CHIP(1005)	100K 1/16W J 1005 TAPE
R098	AB374ZVBAE	BRFA161034G	R:CARBON FIXED CHIP(1005)	10K 1/16W J 1005 TAPE
R099	AB374ZVBAE	BRFA161034G	R:CARBON FIXED CHIP(1005)	10K 1/16W J 1005 TAPE
R101	AB374ZVBAE	BRFA162204G	R:CARBON FIXED CHIP(1005)	22 1/16W J 1005 TAPE
R102	AB374ZVBAE	BRFA162204G	R:CARBON FIXED CHIP(1005)	22 1/16W J 1005 TAPE

R103	AB374ZVBAE	BRFA161034G	R:CARBON FIXED CHIP(1005)	10K 1/16W J 1005 TAPE
R104	AB374ZVBAE	BRFA161024G	R:CARBON FIXED CHIP(1005)	1K 1/16W J 1005 TAPE
R105	AB374ZVBAE	BRFA164724G	R:CARBON FIXED CHIP(1005)	4.7K 1/16W J 1005 TAPE
R106	AB374ZVBAE	BRFA164724G	R:CARBON FIXED CHIP(1005)	4.7K 1/16W J 1005 TAPE
R107	AB374ZVBAE	BRFA165624G	R:CARBON FIXED CHIP(1005)	5.6K 1/16W J 1005 TAPE
R108	AB374ZVBAE	BRFA164724G	R:CARBON FIXED CHIP(1005)	4.7K 1/16W J 1005 TAPE
R109	AB374ZVBAE	BRFA161014G	R:CARBON FIXED CHIP(1005)	100 1/16W J 1005 TAPE
R111	AB374ZVBAE	BRFA161024G	R:CARBON FIXED CHIP(1005)	1K 1/16W J 1005 TAPE
R112	AB374ZVBAE	BRFA166824G	R:CARBON FIXED CHIP(1005)	6.8K 1/16W J 1005 TAPE
R113	AB374ZVBAE	BRFA166814G	R:CARBON FIXED CHIP(1005)	680 1/16W J 1005 TAPE
R114	AB374ZVBAE	BRFA162224G	R:CARBON FIXED CHIP(1005)	2.2K 1/16W J 1005 TAPE
R115	AB374ZVBAE	BRFA164724G	R:CARBON FIXED CHIP(1005)	4.7K 1/16W J 1005 TAPE
R116	AB374ZVBAE	BRFA163314G	R:CARBON FIXED CHIP(1005)	330 1/16W J 1005 TAPE
R117	AB374ZVBAE	BRFA161514G	R:CARBON FIXED CHIP(1005)	150 1/16W J 1005 TAPE
R118	AB374ZVBAE	BRFA163934G	R:CARBON FIXED CHIP(1005)	39K 1/16W J 1005 TAPE
R119	AB374ZVBAE	BRFA162214G	R:CARBON FIXED CHIP(1005)	220 1/16W J 1005 TAPE
R121	AB374ZVBAE	BRFA164734G	R:CARBON FIXED CHIP(1005)	47K 1/16W J 1005 TAPE
R122	AB374ZVBAE	BRFA161034G	R:CARBON FIXED CHIP(1005)	10K 1/16W J 1005 TAPE
R123	AB374ZVBAE	BRFA164724G	R:CARBON FIXED CHIP(1005)	4.7K 1/16W J 1005 TAPE
R124	AB374ZVBAE	BRFA161014G	R:CARBON FIXED CHIP(1005)	100 1/16W J 1005 TAPE
R125	AB374ZVBAE	BRFA162734G	R:CARBON FIXED CHIP(1005)	27K 1/16W J 1005 TAPE
R126	AB374ZVBAE	BRFA162214G	R:CARBON FIXED CHIP(1005)	220 1/16W J 1005 TAPE
R127	AB374ZVBAE	BRFA164734G	R:CARBON FIXED CHIP(1005)	47K 1/16W J 1005 TAPE
R128	AB374ZVBAE	BRFA161034G	R:CARBON FIXED CHIP(1005)	10K 1/16W J 1005 TAPE
R129	AB374ZVBAE	BRFA162204G	R:CARBON FIXED CHIP(1005)	22 1/16W J 1005 TAPE
R130	AB374ZVBAE	BRFA160004G	R:CARBON FIXED CHIP(1005)	0 1/16W J 1005 TAPE
R131	AB374ZVBAE	BRFA162214G	R:CARBON FIXED CHIP(1005)	220 1/16W J 1005 TAPE
R132	AB374ZVBAE	BRFA162234G	R:CARBON FIXED CHIP(1005)	22K 1/16W J 1005 TAPE
R133	AB374ZVBAE	BRFC163934G	R:CARBON FIXED CHIP(1608)	39K 1/16W J TAPE
R134	AB374ZVBAE	BRFA162214G	R:CARBON FIXED CHIP(1005)	220 1/16W J 1005 TAPE
R135	AB374ZVBAE	BRFA162214G	R:CARBON FIXED CHIP(1005)	220 1/16W J 1005 TAPE
R136	AB374ZVBAE	BRFC164704G	R:CARBON FIXED CHIP(1608)	47 1/16W J TAPE
R137	AB374ZVBAE	BRFA162724G	R:CARBON FIXED CHIP(1005)	2.7K 1/16W J 1005 TAPE
R138	AB374ZVBAE	BRFA161024G	R:CARBON FIXED CHIP(1005)	1K 1/16W J 1005 TAPE
R139	AB374ZVBAE	BRFA164724G	R:CARBON FIXED CHIP(1005)	4.7K 1/16W J 1005 TAPE
R141	AB374ZVBAE	BRFA161224G	R:CARBON FIXED CHIP(1005)	1.2K 1/16W J 1005 TAPE
R142	AB374ZVBAE	BRFA163334G	R:CARBON FIXED CHIP(1005)	33K 1/16W J 1005 TAPE
R143	AB374ZVBAE	BRFA163304G	R:CARBON FIXED CHIP(1005)	33 1/16W J 1005 TAPE
R144	AB374ZVBAE	BRFA162234G	R:CARBON FIXED CHIP(1005)	22K 1/16W J 1005 TAPE
R145	AB374ZVBAE	BRFA162214G	R:CARBON FIXED CHIP(1005)	220 1/16W J 1005 TAPE
R146	AB374ZVBAE	BRFA162214G	R:CARBON FIXED CHIP(1005)	220 1/16W J 1005 TAPE
R147	AB374ZVBAE	BRFA165614G	R:CARBON FIXED CHIP(1005)	560 1/16W J 1005 TAPE
R148	AB374ZVBAE	BRFA163314G	R:CARBON FIXED CHIP(1005)	330 1/16W J 1005 TAPE
R149	AB374ZVBAE	BRFA164734G	R:CARBON FIXED CHIP(1005)	47K 1/16W J 1005 TAPE
R150	AB374ZVBAE	BRFA160004G	R:CARBON FIXED CHIP(1005)	0 1/16W J 1005 TAPE
R151	AB374ZVBAE	BRFA161034G	R:CARBON FIXED CHIP(1005)	10K 1/16W J 1005 TAPE
R152	AB374ZVBAE	BRFA162204G	R:CARBON FIXED CHIP(1005)	22 1/16W J 1005 TAPE
R154	AB374ZVBAE	BRFA163334G	R:CARBON FIXED CHIP(1005)	33K 1/16W J 1005 TAPE
R155	AB374ZVBAE	BRFA164724G	R:CARBON FIXED CHIP(1005)	4.7K 1/16W J 1005 TAPE
R156	AB374ZVBAE	BRFA165624G	R:CARBON FIXED CHIP(1005)	5.6K 1/16W J 1005 TAPE
R157	AB374ZVBAE	BRFA164714G	R:CARBON FIXED CHIP(1005)	470 1/16W J 1005 TAPE
R158	AB374ZVBAE	BRFA161524G	R:CARBON FIXED CHIP(1005)	1.5K 1/16W J 1005 TAPE
R159	AB374ZVBAE	BRFA164734G	R:CARBON FIXED CHIP(1005)	47K 1/16W J 1005 TAPE
R161	AB374ZVBAE	BRFA161024G	R:CARBON FIXED CHIP(1005)	1K 1/16W J 1005 TAPE

R162	AB374ZVBAE	BRFA164724G	R:CARBON FIXED CHIP(1005)	4.7K 1/16W J 1005 TAPE
R163	AB374ZVBAE	BRFA162214G	R:CARBON FIXED CHIP(1005)	220 1/16W J 1005 TAPE
R164	AB374ZVBAE	BRFA165634G	R:CARBON FIXED CHIP(1005)	56K 1/16W J 1005 TAPE
R167	AB374ZVBAE	BRFA161024G	R:CARBON FIXED CHIP(1005)	1K 1/16W J 1005 TAPE
R168	AB374ZVBAE	BRFA163324G	R:CARBON FIXED CHIP(1005)	3.3K 1/16W J 1005 TAPE
R169	AB374ZVBAE	BRFA164734G	R:CARBON FIXED CHIP(1005)	47K 1/16W J 1005 TAPE
R171	AB374ZVBAE	BRFA164734G	R:CARBON FIXED CHIP(1005)	47K 1/16W J 1005 TAPE
R172	AB374ZVBAE	BRFA164734G	R:CARBON FIXED CHIP(1005)	47K 1/16W J 1005 TAPE
R173	AB374ZVBAE	BRFA164734G	R:CARBON FIXED CHIP(1005)	47K 1/16W J 1005 TAPE
R174	AB374ZVBAE	BRFA164734G	R:CARBON FIXED CHIP(1005)	47K 1/16W J 1005 TAPE
R175	AB374ZVBAE	BRFA164734G	R:CARBON FIXED CHIP(1005)	47K 1/16W J 1005 TAPE
R176	AB374ZVBAE	BRFA164734G	R:CARBON FIXED CHIP(1005)	47K 1/16W J 1005 TAPE
R177	AB374ZVBAE	BRFA164734G	R:CARBON FIXED CHIP(1005)	47K 1/16W J 1005 TAPE
R178	AB374ZVBAE	BRFA161034G	R:CARBON FIXED CHIP(1005)	10K 1/16W J 1005 TAPE
R179	AB374ZVBAE	BRFA164734G	R:CARBON FIXED CHIP(1005)	47K 1/16W J 1005 TAPE
R181	AB374ZVBAE	BRFA161034G	R:CARBON FIXED CHIP(1005)	10K 1/16W J 1005 TAPE
R182	AB374ZVBAE	BRFA164734G	R:CARBON FIXED CHIP(1005)	47K 1/16W J 1005 TAPE
R183	AB374ZVBAE	BRFA161834G	R:CARBON FIXED CHIP(1005)	18K 1/16W J 1005 TAPE
R185	AB374ZVBAE	BRFA166824G	R:CARBON FIXED CHIP(1005)	6.8K 1/16W J 1005 TAPE
R186	AB374ZVBAE	BRFA161034G	R:CARBON FIXED CHIP(1005)	10K 1/16W J 1005 TAPE
R187	AB374ZVBAE	BRFA161033G	R:CARBON FIXED CHIP(1005)	10K 1/16W F TAPE
R188	AB374ZVBAE	BRFA163344G	R:CARBON FIXED CHIP(1005)	330K 1/16W J 1005 TAPE
R189	AB374ZVBAE	BRFA163344G	R:CARBON FIXED CHIP(1005)	330K 1/16W J 1005 TAPE
R191	AB374ZVBAE	BRFA163324G	R:CARBON FIXED CHIP(1005)	3.3K 1/16W J 1005 TAPE
R192	AB374ZVBAE	BRFA161244G	R:CARBON FIXED CHIP(1005)	120K 1/16W J 1005 TAPE
R193	AB374ZVBAE	BRFC162234G	R:CARBON FIXED CHIP(1608)	22K 1/16W J TAPE
R195	AB374ZVBAE	BRFA161034G	R:CARBON FIXED CHIP(1005)	10K 1/16W J 1005 TAPE
R196	AB374ZVBAE	BRFA161034G	R:CARBON FIXED CHIP(1005)	10K 1/16W J 1005 TAPE
R197	AB374ZVBAE	BRFA162244G	R:CARBON FIXED CHIP(1005)	220K 1/16W J 1005 TAPE
R198	AB374ZVBAE	BRFA166834G	R:CARBON FIXED CHIP(1005)	68K 1/16W J 1005 TAPE
R199	AB374ZVBAE	BRFA164724G	R:CARBON FIXED CHIP(1005)	4.7K 1/16W J 1005 TAPE
R201	AB374ZVBAE	BRFA160004G	R:CARBON FIXED CHIP(1005)	0 1/16W J 1005 TAPE
R203	AB374ZVBAE	BRFA161044G	R:CARBON FIXED CHIP(1005)	100K 1/16W J 1005 TAPE
R204	AB374ZVBAE	BRFA161034G	R:CARBON FIXED CHIP(1005)	10K 1/16W J 1005 TAPE
R205	AB374ZVBAE	BRFA161034G	R:CARBON FIXED CHIP(1005)	10K 1/16W J 1005 TAPE
R206	AB374ZVBAE	BRFA161034G	R:CARBON FIXED CHIP(1005)	10K 1/16W J 1005 TAPE
R207	AB374ZVBAE	BRFA163334G	R:CARBON FIXED CHIP(1005)	33K 1/16W J 1005 TAPE
R208	AB374ZVBAE	BRFA161034G	R:CARBON FIXED CHIP(1005)	10K 1/16W J 1005 TAPE
R209	AB374ZVBAE	BRFA162234G	R:CARBON FIXED CHIP(1005)	22K 1/16W J 1005 TAPE
R210	AB374ZVBAE	BRFA164734G	R:CARBON FIXED CHIP(1005)	47K 1/16W J 1005 TAPE
R211	AB374ZVBAE	BRFA161044G	R:CARBON FIXED CHIP(1005)	100K 1/16W J 1005 TAPE
R212	AB374ZVBAE	BRFA161034G	R:CARBON FIXED CHIP(1005)	10K 1/16W J 1005 TAPE
R213	AB374ZVBAE	BRFA162234G	R:CARBON FIXED CHIP(1005)	22K 1/16W J 1005 TAPE
R214	AB374ZVBAE	BRFA166844G	R:CARBON FIXED CHIP(1005)	680K 1/16W J 1005 TAPE
R215	AB374ZVBAE	BRFA161024G	R:CARBON FIXED CHIP(1005)	1K 1/16W J 1005 TAPE
R216	AB374ZVBAE	BRFC011004G	R:CARBON FIXED CHIP(2125)	10 1/10W J TAPE
R217	AB374ZVBAE	BRFB181514G	R:CARBON FIXED CHIP(2125)	150 1/8W J TAPE
R218	AB374ZVBAE	BRFA161044G	R:CARBON FIXED CHIP(1005)	100K 1/16W J 1005 TAPE
R219	AB374ZVBAE	BRFA161814G	R:CARBON FIXED CHIP(1005)	180 1/16W J 1005 TAPE
R221	AB374ZVBAE	BRFA161094G	R:CARBON FIXED CHIP(1005)	1 1/16W J 1005 TAPE
R222	AB374ZVBAE	BRFA160004G	R:CARBON FIXED CHIP(1005)	0 1/16W J 1005 TAPE
R223	AB374ZVBAE	BRFA161094G	R:CARBON FIXED CHIP(1005)	1 1/16W J 1005 TAPE
R224	AB374ZVBAE	BRFA165643G	R:CARBON FIXED CHIP(1005)	560K 1/16W F TAPE
R225	AB374ZVBAE	BRFA163333G	R:CARBON FIXED CHIP(1005)	33K 1/16W F TAPE

R226	AB374ZVBAE	BRFA161034G	R:CARBON FIXED CHIP(1005)	10K 1/16W J 1005 TAPE
R227	AB374ZVBAE	BRFA161034G	R:CARBON FIXED CHIP(1005)	10K 1/16W J 1005 TAPE
R228	AB374ZVBAE	BRFA162224G	R:CARBON FIXED CHIP(1005)	2.2K 1/16W J 1005 TAPE
R229	AB374ZVBAE	BRFA161034G	R:CARBON FIXED CHIP(1005)	10K 1/16W J 1005 TAPE
R230	AB374ZVBAE	BRFA160004G	R:CARBON FIXED CHIP(1005)	0 1/16W J 1005 TAPE
R231	AB374ZVBAE	BRFA162294G	R:CARBON FIXED CHIP(1005)	2.2 1/16W J 1005 TAPE
R232	AB374ZVBAE	BRFA162294G	R:CARBON FIXED CHIP(1005)	2.2 1/16W J 1005 TAPE
R234	AB374ZVBAE	BRFA163334G	R:CARBON FIXED CHIP(1005)	33K 1/16W J 1005 TAPE
R235	AB374ZVBAE	BRFA164734G	R:CARBON FIXED CHIP(1005)	47K 1/16W J 1005 TAPE
R236	AB374ZVBAE	BRFA160004G	R:CARBON FIXED CHIP(1005)	0 1/16W J 1005 TAPE
R301	AB374ZVBBE	BRFA161524G	R:CARBON FIXED CHIP(1005)	1.5K 1/16W J 1005 TAPE
R302	AB374ZVBBE	BRFA161044G	R:CARBON FIXED CHIP(1005)	100K 1/16W J 1005 TAPE
R303	AB374ZVBBE	BRFA161044G	R:CARBON FIXED CHIP(1005)	100K 1/16W J 1005 TAPE
R304	AB374ZVBBE	BRFA161024G	R:CARBON FIXED CHIP(1005)	1K 1/16W J 1005 TAPE
R305	AB374ZVBBE	BRFA164734G	R:CARBON FIXED CHIP(1005)	47K 1/16W J 1005 TAPE
R306	AB374ZVBBE	BRFA166833G	R:CARBON FIXED CHIP(1005)	68K 1/16W F TAPE
R307	AB374ZVBBE	BRFA166833G	R:CARBON FIXED CHIP(1005)	68K 1/16W F TAPE
R308	AB374ZVBBE	BRFA161034G	R:CARBON FIXED CHIP(1005)	10K 1/16W J 1005 TAPE
R309	AB374ZVBBE	BRFC108294G	R:CARBON FIXED CHIP(6432)	8.2 1W J TAPE
R311	AB374ZVBBE	BRFA164733G	R:CARBON FIXED CHIP(1005)	47K 1/16W F TAPE
R312	AB374ZVBBE	BRFA168233G	R:CARBON FIXED CHIP(1005)	82K 1/16W F TAPE
R313	AB374ZVBBE	BRFA161044G	R:CARBON FIXED CHIP(1005)	100K 1/16W J 1005 TAPE
R314	AB374ZVBBE	BRFA161524G	R:CARBON FIXED CHIP(1005)	1.5K 1/16W J 1005 TAPE
R315	AB374ZVBBE	BRFA161034G	R:CARBON FIXED CHIP(1005)	10K 1/16W J 1005 TAPE
R316	AB374ZVBBE	BRFA161034G	R:CARBON FIXED CHIP(1005)	10K 1/16W J 1005 TAPE
R317	AB374ZVBBE	BRFA161034G	R:CARBON FIXED CHIP(1005)	10K 1/16W J 1005 TAPE
R318	AB374ZVBBE	BRFA164734G	R:CARBON FIXED CHIP(1005)	47K 1/16W J 1005 TAPE
R319	AB374ZVBBE	BRFA161034G	R:CARBON FIXED CHIP(1005)	10K 1/16W J 1005 TAPE
R320	AB374ZVBBE	BRFA161034G	R:CARBON FIXED CHIP(1005)	10K 1/16W J 1005 TAPE
R321	AB374ZVBBE	BRFA161034G	R:CARBON FIXED CHIP(1005)	10K 1/16W J 1005 TAPE
R322	AB374ZVBBE	BRFA161034G	R:CARBON FIXED CHIP(1005)	10K 1/16W J 1005 TAPE
R323	AB374ZVBBE	BRFA161034G	R:CARBON FIXED CHIP(1005)	10K 1/16W J 1005 TAPE
R324	AB374ZVBBE	BRFA163324G	R:CARBON FIXED CHIP(1005)	3.3K 1/16W J 1005 TAPE
R326	AB374ZVBBE	BRFA161034G	R:CARBON FIXED CHIP(1005)	10K 1/16W J 1005 TAPE
R327	AB374ZVBBE	BRFA161034G	R:CARBON FIXED CHIP(1005)	10K 1/16W J 1005 TAPE
R328	AB374ZVBBE	BRFA161034G	R:CARBON FIXED CHIP(1005)	10K 1/16W J 1005 TAPE
R331	AB374ZVBBE	BRFA164704G	R:CARBON FIXED CHIP(1005)	47 1/16W J 1005 TAPE
R332	AB374ZVBBE	BRFA164704G	R:CARBON FIXED CHIP(1005)	47 1/16W J 1005 TAPE
R333	AB374ZVBBE	BRFA164704G	R:CARBON FIXED CHIP(1005)	47 1/16W J 1005 TAPE
R334	AB374ZVBBE	BRFA164704G	R:CARBON FIXED CHIP(1005)	47 1/16W J 1005 TAPE
R335	AB374ZVBBE	BRFA164704G	R:CARBON FIXED CHIP(1005)	47 1/16W J 1005 TAPE
R337	AB374ZVBBE	BRFA164734G	R:CARBON FIXED CHIP(1005)	47K 1/16W J 1005 TAPE
R342	AB374ZVBBE	BRFA161024G	R:CARBON FIXED CHIP(1005)	1K 1/16W J 1005 TAPE
R343	AB374ZVBBE	BRFA161034G	R:CARBON FIXED CHIP(1005)	10K 1/16W J 1005 TAPE
R344	AB374ZVBBE	BRFA161024G	R:CARBON FIXED CHIP(1005)	1K 1/16W J 1005 TAPE
R345	AB374ZVBBE	BRFA164734G	R:CARBON FIXED CHIP(1005)	47K 1/16W J 1005 TAPE
R346	AB374ZVBBE	BRFA161814G	R:CARBON FIXED CHIP(1005)	180 1/16W J 1005 TAPE
R347	AB374ZVBBE	BRFA161814G	R:CARBON FIXED CHIP(1005)	180 1/16W J 1005 TAPE
R348	AB374ZVBBE	BRFA161814G	R:CARBON FIXED CHIP(1005)	180 1/16W J 1005 TAPE
R352	AB374ZVBBE	BRFA163334G	R:CARBON FIXED CHIP(1005)	33K 1/16W J 1005 TAPE
R353	AB374ZVBBE	BRFA164734G	R:CARBON FIXED CHIP(1005)	47K 1/16W J 1005 TAPE
R354	AB374ZVBBE	BRFA164734G	R:CARBON FIXED CHIP(1005)	47K 1/16W J 1005 TAPE
R355	AB374ZVBBE	BRFA162744G	R:CARBON FIXED CHIP(1005)	270K 1/16W J 1005 TAPE
R356	AB374ZVBBE	BRFA161044G	R:CARBON FIXED CHIP(1005)	100K 1/16W J 1005 TAPE

R357	AB374ZVBBE	BRFA161044G	R:CARBON FIXED CHIP(1005)	100K 1/16W J 1005 TAPE
R358	AB374ZVBBE	BRFA164734G	R:CARBON FIXED CHIP(1005)	47K 1/16W J 1005 TAPE
R359	AB374ZVBBE	BRFA164734G	R:CARBON FIXED CHIP(1005)	47K 1/16W J 1005 TAPE
R361	AB374ZVBBE	BRFA164734G	R:CARBON FIXED CHIP(1005)	47K 1/16W J 1005 TAPE
R362	AB374ZVBBE	BRFA168244G	R:CARBON FIXED CHIP(1005)	820K 1/16W J 1005 TAPE
R363	AB374ZVBBE	BRFA168244G	R:CARBON FIXED CHIP(1005)	820K 1/16W J 1005 TAPE
R365	AB374ZVBBE	BRFA163334G	R:CARBON FIXED CHIP(1005)	33K 1/16W J 1005 TAPE
R366	AB374ZVBBE	BRFA161844G	R:CARBON FIXED CHIP(1005)	180K 1/16W J 1005 TAPE
R367	AB374ZVBBE	BRFA168224G	R:CARBON FIXED CHIP(1005)	8.2K 1/16W J 1005 TAPE
R369	AB374ZVBBE	BRFA163324G	R:CARBON FIXED CHIP(1005)	3.3K 1/16W J 1005 TAPE
R370	AB374ZVBBE	BRFC010004G	R:CARBON FIXED CHIP(2125)	0 1/10W J TAPE
R371	AB374ZVBBE	BRFA163324G	R:CARBON FIXED CHIP(1005)	3.3K 1/16W J 1005 TAPE
R372	AB374ZVBBE	BRFA164744G	R:CARBON FIXED CHIP(1005)	470K 1/16W J 1005 TAPE
R373	AB374ZVBBE	BRFA162224G	R:CARBON FIXED CHIP(1005)	2.2K 1/16W J 1005 TAPE
R374	AB374ZVBBE	BRFA164704G	R:CARBON FIXED CHIP(1005)	47 1/16W J 1005 TAPE
R375	AB374ZVBBE	BRFA161234G	R:CARBON FIXED CHIP(1005)	12K 1/16W J 1005 TAPE
R376	AB374ZVBBE	BRFA162234G	R:CARBON FIXED CHIP(1005)	22K 1/16W J 1005 TAPE
R377	AB374ZVBBE	BRFA162234G	R:CARBON FIXED CHIP(1005)	22K 1/16W J 1005 TAPE
R378	AB374ZVBBE	BRFA162234G	R:CARBON FIXED CHIP(1005)	22K 1/16W J 1005 TAPE
R379	AB374ZVBBE	BRFA162234G	R:CARBON FIXED CHIP(1005)	22K 1/16W J 1005 TAPE
R381	AB374ZVBBE	BRFA161524G	R:CARBON FIXED CHIP(1005)	1.5K 1/16W J 1005 TAPE
R382	AB374ZVBBE	BRFA161034G	R:CARBON FIXED CHIP(1005)	10K 1/16W J 1005 TAPE
R383	AB374ZVBBE	BRFA161034G	R:CARBON FIXED CHIP(1005)	10K 1/16W J 1005 TAPE
R401	AB374ZVBBE	BRFA161014G	R:CARBON FIXED CHIP(1005)	100 1/16W J 1005 TAPE
R402	AB374ZVBBE	BRFA161034G	R:CARBON FIXED CHIP(1005)	10K 1/16W J 1005 TAPE
R403	AB374ZVBBE	BRFA161054G	R:CARBON FIXED CHIP(1005)	1M 1/16W J 1005 TAPE
R404	AB374ZVBBE	BRFA160004G	R:CARBON FIXED CHIP(1005)	0 1/16W J 1005 TAPE
R405	AB374ZVBBE	BRFA161024G	R:CARBON FIXED CHIP(1005)	1K 1/16W J 1005 TAPE
R406	AB374ZVBBE	BRFA164734G	R:CARBON FIXED CHIP(1005)	47K 1/16W J 1005 TAPE
R407	AB374ZVBBE	BRFA161024G	R:CARBON FIXED CHIP(1005)	1K 1/16W J 1005 TAPE
R408	AB374ZVBBE	BRFA164734G	R:CARBON FIXED CHIP(1005)	47K 1/16W J 1005 TAPE
R409	AB374ZVBBE	BRFA161024G	R:CARBON FIXED CHIP(1005)	1K 1/16W J 1005 TAPE
R411	AB374ZVBBE	BRFA161034G	R:CARBON FIXED CHIP(1005)	10K 1/16W J 1005 TAPE
R412	AB374ZVBBE	BRFA161034G	R:CARBON FIXED CHIP(1005)	10K 1/16W J 1005 TAPE
R413	AB374ZVBBE	BRFA161034G	R:CARBON FIXED CHIP(1005)	10K 1/16W J 1005 TAPE
R414	AB374ZVBBE	BRFA161024G	R:CARBON FIXED CHIP(1005)	1K 1/16W J 1005 TAPE
R415	AB374ZVBBE	BRFA164734G	R:CARBON FIXED CHIP(1005)	47K 1/16W J 1005 TAPE
R416	AB374ZVBBE	BRFA163304G	R:CARBON FIXED CHIP(1005)	33 1/16W J 1005 TAPE
R417	AB374ZVBBE	BRFA163304G	R:CARBON FIXED CHIP(1005)	33 1/16W J 1005 TAPE
R418	AB374ZVBBE	BRFA161024G	R:CARBON FIXED CHIP(1005)	1K 1/16W J 1005 TAPE
R419	AB374ZVBBE	BRFA161024G	R:CARBON FIXED CHIP(1005)	1K 1/16W J 1005 TAPE
R420	AB374ZVBBE	BRFA164734G	R:CARBON FIXED CHIP(1005)	47K 1/16W J 1005 TAPE
R421	AB374ZVBBE	BRFA161024G	R:CARBON FIXED CHIP(1005)	1K 1/16W J 1005 TAPE
R422	AB374ZVBBE	BRFA161024G	R:CARBON FIXED CHIP(1005)	1K 1/16W J 1005 TAPE
R423	AB374ZVBBE	BRFA161024G	R:CARBON FIXED CHIP(1005)	1K 1/16W J 1005 TAPE
R424	AB374ZVBBE	BRFA161024G	R:CARBON FIXED CHIP(1005)	1K 1/16W J 1005 TAPE
R425	AB374ZVBBE	BRFA161024G	R:CARBON FIXED CHIP(1005)	1K 1/16W J 1005 TAPE
R426	AB374ZVBBE	BRFA161024G	R:CARBON FIXED CHIP(1005)	1K 1/16W J 1005 TAPE
R427	AB374ZVBBE	BRFA164734G	R:CARBON FIXED CHIP(1005)	47K 1/16W J 1005 TAPE
R428	AB374ZVBBE	BRFA161024G	R:CARBON FIXED CHIP(1005)	1K 1/16W J 1005 TAPE
R429	AB374ZVBBE	BRFA161024G	R:CARBON FIXED CHIP(1005)	1K 1/16W J 1005 TAPE
R431	AB374ZVBBE	BRFA161024G	R:CARBON FIXED CHIP(1005)	1K 1/16W J 1005 TAPE
R432	AB374ZVBBE	BRFA161024G	R:CARBON FIXED CHIP(1005)	1K 1/16W J 1005 TAPE
R433	AB374ZVBBE	BRFA161024G	R:CARBON FIXED CHIP(1005)	1K 1/16W J 1005 TAPE

R434	AB374ZVBBE	BRFA161024G	R:CARBON FIXED CHIP(1005)	1K 1/16W J 1005 TAPE
R435	AB374ZVBBE	BRFA161034G	R:CARBON FIXED CHIP(1005)	10K 1/16W J 1005 TAPE
R436	AB374ZVBBE	BRFA161024G	R:CARBON FIXED CHIP(1005)	1K 1/16W J 1005 TAPE
R437	AB374ZVBBE	BRFA161024G	R:CARBON FIXED CHIP(1005)	1K 1/16W J 1005 TAPE
R438	AB374ZVBBE	BRFA161024G	R:CARBON FIXED CHIP(1005)	1K 1/16W J 1005 TAPE
R439	AB374ZVBBE	BRFA161024G	R:CARBON FIXED CHIP(1005)	1K 1/16W J 1005 TAPE
R441	AB374ZVBBE	BRFA161024G	R:CARBON FIXED CHIP(1005)	1K 1/16W J 1005 TAPE
R442	AB374ZVBBE	BRFA164734G	R:CARBON FIXED CHIP(1005)	47K 1/16W J 1005 TAPE
R443	AB374ZVBBE	BRFA164734G	R:CARBON FIXED CHIP(1005)	47K 1/16W J 1005 TAPE
R444	AB374ZVBBE	BRFA164734G	R:CARBON FIXED CHIP(1005)	47K 1/16W J 1005 TAPE
R445	AB374ZVBBE	BRFA164734G	R:CARBON FIXED CHIP(1005)	47K 1/16W J 1005 TAPE
R446	AB374ZVBBE	BRFA164734G	R:CARBON FIXED CHIP(1005)	47K 1/16W J 1005 TAPE
R447	AB374ZVBBE	BRFA161024G	R:CARBON FIXED CHIP(1005)	1K 1/16W J 1005 TAPE
R448	AB374ZVBBE	BRFA161024G	R:CARBON FIXED CHIP(1005)	1K 1/16W J 1005 TAPE
R449	AB374ZVBBE	BRFA161024G	R:CARBON FIXED CHIP(1005)	1K 1/16W J 1005 TAPE
R451	AB374ZVBBE	BRFA161024G	R:CARBON FIXED CHIP(1005)	1K 1/16W J 1005 TAPE
R452	AB374ZVBBE	BRFA164734G	R:CARBON FIXED CHIP(1005)	47K 1/16W J 1005 TAPE
R453	AB374ZVBBE	BRFA164734G	R:CARBON FIXED CHIP(1005)	47K 1/16W J 1005 TAPE
R454	AB374ZVBBE	BRFA164734G	R:CARBON FIXED CHIP(1005)	47K 1/16W J 1005 TAPE
R455	AB374ZVBBE	BRFA164734G	R:CARBON FIXED CHIP(1005)	47K 1/16W J 1005 TAPE
R456	AB374ZVBBE	BRFA161034G	R:CARBON FIXED CHIP(1005)	10K 1/16W J 1005 TAPE
R457	AB374ZVBBE	BRFA161024G	R:CARBON FIXED CHIP(1005)	1K 1/16W J 1005 TAPE
R458	AB374ZVBBE	BRFA161024G	R:CARBON FIXED CHIP(1005)	1K 1/16W J 1005 TAPE
R459	AB374ZVBBE	BRFA161024G	R:CARBON FIXED CHIP(1005)	1K 1/16W J 1005 TAPE
R461	AB374ZVBBE	BRFA161024G	R:CARBON FIXED CHIP(1005)	1K 1/16W J 1005 TAPE
R462	AB374ZVBBE	BRFA161024G	R:CARBON FIXED CHIP(1005)	1K 1/16W J 1005 TAPE
R463	AB374ZVBBE	BRFA161024G	R:CARBON FIXED CHIP(1005)	1K 1/16W J 1005 TAPE
R464	AB374ZVBBE	BRFA164734G	R:CARBON FIXED CHIP(1005)	47K 1/16W J 1005 TAPE
R465	AB374ZVBBE	BRFA164734G	R:CARBON FIXED CHIP(1005)	47K 1/16W J 1005 TAPE
R466	AB374ZVBBE	BRFA164734G	R:CARBON FIXED CHIP(1005)	47K 1/16W J 1005 TAPE
R467	AB374ZVBBE	BRFA164734G	R:CARBON FIXED CHIP(1005)	47K 1/16W J 1005 TAPE
R468	AB374ZVBBE	BRFA161024G	R:CARBON FIXED CHIP(1005)	1K 1/16W J 1005 TAPE
R469	AB374ZVBBE	BRFA161024G	R:CARBON FIXED CHIP(1005)	1K 1/16W J 1005 TAPE
R471	AB374ZVBBE	BRFA161024G	R:CARBON FIXED CHIP(1005)	1K 1/16W J 1005 TAPE
R472	AB374ZVBBE	BRFA161024G	R:CARBON FIXED CHIP(1005)	1K 1/16W J 1005 TAPE
R473	AB374ZVBBE	BRFA161024G	R:CARBON FIXED CHIP(1005)	1K 1/16W J 1005 TAPE
R474	AB374ZVBBE	BRFA161024G	R:CARBON FIXED CHIP(1005)	1K 1/16W J 1005 TAPE
R475	AB374ZVBBE	BRFA161024G	R:CARBON FIXED CHIP(1005)	1K 1/16W J 1005 TAPE
S001	AB374ZVBAE	BSRG0439002	ITCH:ROTARY(TP70N17AE20 1	439 RY-7645 W/WASHER AND N
S301	AB374ZVBBE	BSWG0932001	SWITCH:SLIDE	SW-932 MS-22C02-TR
X301	AB374ZVBBE	BQXG1039001	CRYSTAL	QX-1039 6.00MHZ
AD901	AB374ZVXYE	BADG1246001	AC ADAPTOR	-1246 S012GM0500100 R018684\
AT901	AB374ZVXYE	BATG0490001	ANTENNA	AT-490 YH930408
BT901	AB374ZVXYE	BBTG0915001	BATTERY	915 KH-50AAJ2300X2S CROSS I
CT301	AB374ZVBBE	BCTG0105100	TRIMMER	CT-105 TZY2Z100A001R00 10P
DP301	AB374ZVBBE	BDLG0655001	LCD MODULE	DL-655 HR-MSB756DFWPS
FT001	AB374ZVBAE	BFLG1055001	FILTER:SAW	FL-1055 NSVS1158
FT002	AB374ZVBAE	BFLG1193001	FILTER:SAW	FL-1193 NSNJ2000
FT003	AB374ZVBAE	BFLG1181001	FILTER:CRYSTAL	FL-1181 DSE-0019 21.3MHZ
FT004	AB374ZVBAE	BFLG1083001	FILTER	FL-1083 LTWC450E
IC001	AB374ZVBAE	BDEG3283003	INTEGRATED CIRCUIT	UPC2757TB TAPE
IC002	AB374ZVBAE	BDEG4598003	INTEGRATED CIRCUIT	NJM2552V-TE1-#ZZZB
IC003	AB374ZVBAE	BDEG3753003	INTEGRATED CIRCUIT	UPC2746TB
IC004	AB374ZVBAE	BDEG3642003	INTEGRATED CIRCUIT	MB15U36PFV-G-BND-ER

IC005	AB374ZVBAE	BDEG3642003	INTEGRATED CIRCUIT	MB15U36PFV-G-BND-ER
IC006	AB374ZVBAE	BDEG5262003	INTEGRATED CIRCUIT	APX358M8G-13
IC008	AB374ZVBAE	BDEG4202003	INTEGRATED CIRCUIT	SM6451B T-G-E2
IC009	AB374ZVBAE	BDEG5241003	INTEGRATED CIRCUIT	BL6290 MSOP8
IC011	AB374ZVBAE	BDEG4260003	INTEGRATED CIRCUIT	NJM2360AM-TE3-#ZZZB
IC012	AB374ZVBAE	BDEG5453003	IC:REGULATOR	NJM2881F33-TE1
IC301	AB374ZVBBE	BDEG5320001	IC:MICOM (FLASH OR OTP)	UPD70F3794GC-UEU-AX
IC302	AB374ZVBBE	BDEG5036003	INTEGRATED CIRCUIT	FM24C128A
IC305	AB374ZVBBE	BDEG5372003	IC	US5U30TR
IC306	AB374ZVBBE	BDEG4262003	INTEGRATED CIRCUIT	S-8520F33MC-BNST2G
IC307	AB374ZVBBE	BDEG5371003	IC	US5U1TR
IC308	AB374ZVBBE	BDEG3755003	INTEGRATED CIRCUIT	XC6367A373MR
IC309	AB374ZVBBE	BDEG5254003	INTEGRATED CIRCUIT	MM3404C33NRE
IC311	AB374ZVBBE	BDEG5252003	INTEGRATED CIRCUIT	PST8328UR
IC312	AB374ZVBBE	BDEG4458003	INTEGRATED CIRCUIT	NJM13403V-TE1-#ZZZB
IC313	AB374ZVBBE	BDEG5262003	INTEGRATED CIRCUIT	APX358M8G-13
MO001	AB374ZVBAE	BMOG0361001	MODULE:TCXO	O-361 TTS27NSC-A18 20.85MHZ
SP601	AB374ZVBYE	BSPG0631001	SPEAKER	SP-631 LYS-S0032-024-015R-01
TP001	AB374ZVBAE	BTPG0137001	TERMINAL PIN	TP-137 IPS-1340-02-T
WA901	AB374ZVXYE	BWZG1750001	WIRE	WZ-1750